

Product datasheet for **TA330445**

HTR1B Rabbit Polyclonal Antibody

Product data:

Product Type:	Primary Antibodies
Applications:	WB
Recommended Dilution:	WB
Reactivity:	Human
Host:	Rabbit
Isotype:	IgG
Clonality:	Polyclonal
Immunogen:	The immunogen for anti-HTR1B antibody: synthetic peptide directed towards the N terminal of human HTR1B. Synthetic peptide located within the following region: MEEPGAQCAPPPPAGSETWVPQANLSSAPSQNCSAKDYIYQDSISLPWKV
Formulation:	Liquid. Purified antibody supplied in 1x PBS buffer with 0.09% (w/v) sodium azide and 2% sucrose. <i>Note that this product is shipped as lyophilized powder to China customers.</i>
Conjugation:	Unconjugated
Storage:	Store at -20°C as received.
Stability:	Stable for 12 months from date of receipt.
Predicted Protein Size:	44 kDa
Gene Name:	5-hydroxytryptamine receptor 1B
Database Link:	NP_000854 Entrez Gene 3351 Human P28222



[View online »](#)

Background: The pathophysiology of depression remains enigmatic, although abnormalities that involve serotonin signaling have been implicated. The serotonin 1B receptor [5-hydroxytryptamine (5-HT1B) receptor] interacts with p11. p11 increases localization of 5-HT1B receptors at the cell surface. p11 is increased in rodent brains by antidepressants or electroconvulsive therapy, but decreased in an animal model of depression and in brain tissue from depressed patients. Overexpression of p11 increases 5-HT1B receptor function in cells and recapitulates certain behaviors seen after antidepressant treatment in mice. p11 knockout mice exhibit a depression-like phenotype and have reduced responsiveness to 5-HT1B receptor agonists and reduced behavioral reactions to an antidepressant.

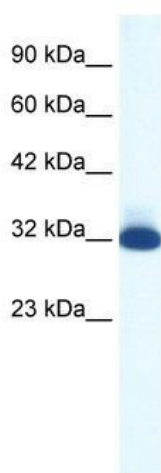
Synonyms: 5-HT1B; 5-HT1DB; HTR1D2; HTR1DB; S12

Note: Immunogen sequence homology: Chimpanzee:100%; Lowland gorilla:100%; Human:100%

Protein Families: Druggable Genome, GPCR, Transmembrane

Protein Pathways: Neuroactive ligand-receptor interaction

Product images:



WB Suggested Anti-HTR1B Antibody Titration:
1.25ug/ml; Positive Control: HepG2 cell lysate