

Product datasheet for **TA330443**

5 HT1A (HTR1A) Rabbit Polyclonal Antibody

Product data:

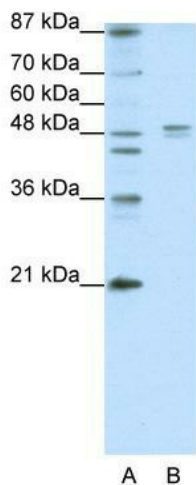
Product Type:	Primary Antibodies
Applications:	WB
Recommended Dilution:	WB
Reactivity:	Human
Host:	Rabbit
Isotype:	IgG
Clonality:	Polyclonal
Immunogen:	The immunogen for anti-HTR1A antibody: synthetic peptide directed towards the N terminal of human HTR1A. Synthetic peptide located within the following region: GQGNNTTSPAPFETGGNTTGISDVTVSYQVITSLLLGTLIFCAVLGNAC
Formulation:	Liquid. Purified antibody supplied in 1x PBS buffer with 0.09% (w/v) sodium azide and 2% sucrose. <i>Note that this product is shipped as lyophilized powder to China customers.</i>
Conjugation:	Unconjugated
Storage:	Store at -20°C as received.
Stability:	Stable for 12 months from date of receipt.
Predicted Protein Size:	46 kDa
Gene Name:	5-hydroxytryptamine receptor 1A
Database Link:	NP_000515 Entrez Gene 3350 Human P08908
Background:	This is one of the several different receptors for 5- hydroxytryptamine (serotonin), a biogenic hormone that functions as a neurotransmitter, a hormone, and a mitogen. The activity of this receptor is mediated by G proteins that inhibits adenylate cyclase activity.
Synonyms:	5-HT-1A; 5-HT1A; 5HT1a; ADRB2RL1; ADRBRL1; G-21; PFMCD
Note:	Immunogen sequence homology: Human: 100%
Protein Families:	Druggable Genome, GPCR, Transmembrane



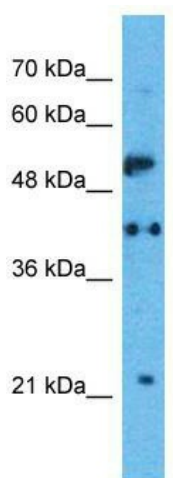
[View online »](#)

Protein Pathways: Neuroactive ligand-receptor interaction

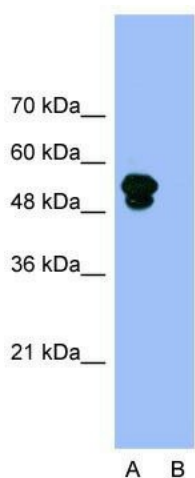
Product images:



HTR1A antibody - N-terminal region validated by WB using primary cultured neurons



Host: Rabbit; Target Name: HTR1A; Sample Tissue: Jurkat Whole Cell lysates; Antibody Dilution: 1.0ug/ml



Anti-HTR1A Western Blot & Peptide Block Validation

Lysate: Jurkat Cell

Lane A: Primary Antibody
Lane B: Primary Antibody + Blocking Peptide

Primary Antibody Concentration: 1.0µg/ml
Peptide Concentration: 1.0µg/ml
Lysate Quantity: 25µg/lane
Gel Concentration: 12%

Host: Rabbit; Target Name: HTR1A; Sample Tissue: Jurkat; Lane A: Primary Antibody; Lane B: Primary Antibody + Blocking Peptide ; Primary Antibody Concentration:1.0ug/mL; Peptide Concentration: 1.0ug/mL; Lysate Quantity: 25ug/lane; Gel Concentration: 12%