

Product datasheet for **TA330442**

GDI2 Rabbit Polyclonal Antibody

Product data:

Product Type:	Primary Antibodies
Applications:	WB
Recommended Dilution:	WB
Reactivity:	Human
Host:	Rabbit
Isotype:	IgG
Clonality:	Polyclonal
Immunogen:	The immunogen for anti-GDI2 antibody: synthetic peptide directed towards the C terminal of human GDI2. Synthetic peptide located within the following region: EPEKEIRPALELLEPIEQKFVSISSLVLPKDLGTESQIFISRTYDATTHF
Formulation:	Liquid. Purified antibody supplied in 1x PBS buffer with 0.09% (w/v) sodium azide and 2% sucrose. <i>Note that this product is shipped as lyophilized powder to China customers.</i>
Conjugation:	Unconjugated
Storage:	Store at -20°C as received.
Stability:	Stable for 12 months from date of receipt.
Predicted Protein Size:	51 kDa
Gene Name:	GDP dissociation inhibitor 2
Database Link:	NP_001485 Entrez Gene 2665 Human P50395



[View online »](#)

Background:

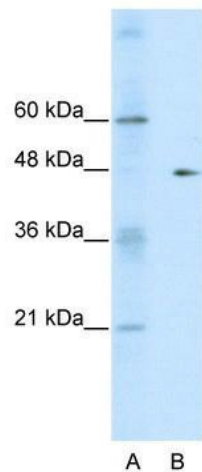
GDP dissociation inhibitors are proteins that regulate the GDP-GTP exchange reaction of members of the rab family, small GTP-binding proteins of the ras superfamily, that are involved in vesicular trafficking of molecules between cellular organelles. GDIs slow the rate of dissociation of GDP from rab proteins and release GDP from membrane-bound rabs. The GDI2 gene contains many repetitive elements indicating that it may be prone to inversion/deletion rearrangements. GDP dissociation inhibitors are proteins that regulate the GDP-GTP exchange reaction of members of the rab family, small GTP-binding proteins of the ras superfamily, that are involved in vesicular trafficking of molecules between cellular organelles. GDIs slow the rate of dissociation of GDP from rab proteins and release GDP from membrane-bound rabs. GDI2 is ubiquitously expressed. The GDI2 gene contains many repetitive elements indicating that it may be prone to inversion/deletion rearrangements.

Synonyms:

HEL-S-46e; RABGDIB

Note:

Immunogen sequence homology: Chicken: 100%; Horse: 100%; Human: 100%; Sheep: 100%; Guinea pig: 92%; Mouse: 92%; Pig: 92%

Product images:

WB Suggested Anti-GDI2 Antibody Titration: 0.2-1 ug/ml; ELISA Titer: 1:312500; Positive Control: HepG2 cell lysate. GDI2 is strongly supported by BioGPS gene expression data to be expressed in Human HepG2 cells