

Product datasheet for **TA330441**

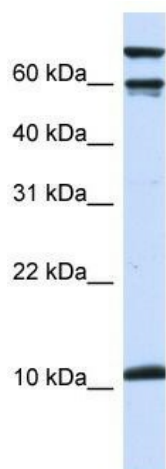
Galanin (GAL) Rabbit Polyclonal Antibody

Product data:

Product Type:	Primary Antibodies
Applications:	WB
Recommended Dilution:	WB
Reactivity:	Human
Host:	Rabbit
Isotype:	IgG
Clonality:	Polyclonal
Immunogen:	The immunogen for anti-GAL antibody: synthetic peptide directed towards the middle region of human GAL. Synthetic peptide located within the following region: LNSAGYLLGPHAVGNHRSFSDKNGLTSKRELRPEDDMKPGSFDRSIPENN
Formulation:	Liquid. Purified antibody supplied in 1x PBS buffer with 0.09% (w/v) sodium azide and 2% sucrose. <i>Note that this product is shipped as lyophilized powder to China customers.</i>
Conjugation:	Unconjugated
Storage:	Store at -20°C as received.
Stability:	Stable for 12 months from date of receipt.
Predicted Protein Size:	13 kDa
Gene Name:	galanin and GMAP prepropeptide
Database Link:	NP_057057 Entrez Gene 51083 Human P22466
Background:	Galanin is small neuropeptide that functions as a cellular messenger within the central and peripheral nervous systems, modulating diverse physiologic functions.
Synonyms:	GAL-GMAP; GALN; GLNN; GMAP
Note:	Immunogen sequence homology: Human: 100%; Dog: 76%
Protein Families:	Secreted Protein, Transmembrane



[View online »](#)

Product images:

WB Suggested Anti-GAL Antibody Titration: 0.2-1 ug/ml; ELISA Titer: 1:312500; Positive Control: Transfected 293TGAL is strongly supported by BioGPS gene expression data to be expressed in Human HEK293T cells