

Product datasheet for **TA330440**

GABRP Rabbit Polyclonal Antibody

Product data:

Product Type:	Primary Antibodies
Applications:	WB
Recommended Dilution:	WB
Reactivity:	Human
Host:	Rabbit
Isotype:	IgG
Clonality:	Polyclonal
Immunogen:	The immunogen for anti-GABRP antibody: synthetic peptide directed towards the N terminal of human GABRP. Synthetic peptide located within the following region: VEVGRSDKLSLPGFENLTAGYNKFLRPNFGGEPVQIALTLDIASISSISE
Formulation:	Liquid. Purified antibody supplied in 1x PBS buffer with 0.09% (w/v) sodium azide and 2% sucrose. <i>Note that this product is shipped as lyophilized powder to China customers.</i>
Conjugation:	Unconjugated
Storage:	Store at -20°C as received.
Stability:	Stable for 12 months from date of receipt.
Predicted Protein Size:	51 kDa
Gene Name:	gamma-aminobutyric acid type A receptor pi subunit
Database Link:	NP_055026 Entrez Gene 2568 Human O00591
Background:	The gamma-aminobutyric acid (GABA) A receptor is a multisubunit chloride channel that mediates the fastest inhibitory synaptic transmission in the central nervous system. The subunit encoded by this gene is expressed in several non-neuronal tissues including the uterus and ovaries. This subunit can assemble with known GABA A receptor subunits, and the presence of this subunit alters the sensitivity of recombinant receptors to modulatory agents such as pregnanolone.
Synonyms:	MGC126386; MGC126387



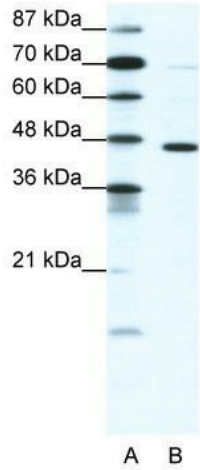
[View online »](#)

Note: Immunogen sequence homology: Dog: 100%; Horse: 100%; Human: 100%; Mouse: 100%; Rabbit: 100%; Rat: 100%

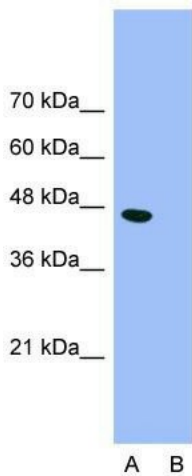
Protein Families: Druggable Genome, Ion Channels: Cys-loop Receptors, Transmembrane

Protein Pathways: Neuroactive ligand-receptor interaction

Product images:



WB Suggested Anti-GABRP Antibody; Titration: 1.25 ug/ml; Positive Control: HepG2/Jurkat



Anti-GABRP Western Blot & Peptide Block Validation

Lysate: Jurkat Cell

Lane A: Primary Antibody
Lane B: Primary Antibody + Blocking Peptide

Primary Antibody Concentration: 1.0µg/ml
Peptide Concentration: 1.0µg/ml
Lysate Quantity: 25µg/lane
Gel Concentration: 12%

Host: Rabbit; Target Name: GABRP; Sample Tissue: Jurkat; Lane A: Primary Antibody; Lane B: Primary Antibody + Blocking Peptide ; Primary Antibody Concentration:1.0ug/mL; Peptide Concentration: 1.0ug/mL; Lysate Quantity: 25ug/lane; Gel Concentration: 12%