

Product datasheet for **TA330438**

GABA A Receptor gamma 2 (GABRG2) Rabbit Polyclonal Antibody

Product data:

Product Type:	Primary Antibodies
Applications:	WB
Recommended Dilution:	WB
Reactivity:	Human
Host:	Rabbit
Isotype:	IgG
Clonality:	Polyclonal
Immunogen:	The immunogen for anti-GABRG2 antibody: synthetic peptide directed towards the N terminal of human GABRG2. Synthetic peptide located within the following region: GFTSQKSDDDYEDYASNKTWVLPKVPEGDVTVILNNLLEGYDNKLRPDI
Formulation:	Liquid. Purified antibody supplied in 1x PBS buffer with 0.09% (w/v) sodium azide and 2% sucrose. <i>Note that this product is shipped as lyophilized powder to China customers.</i>
Conjugation:	Unconjugated
Storage:	Store at -20°C as received.
Stability:	Stable for 12 months from date of receipt.
Predicted Protein Size:	50 kDa
Gene Name:	gamma-aminobutyric acid type A receptor gamma2 subunit
Database Link:	NP_000807 Entrez Gene 2566 Human P18507



[View online »](#)

Background:

GABRG2 is a gamma-aminobutyric acid (GABA) receptor. GABA is the major inhibitory neurotransmitter in the mammalian brain, where it acts at GABA-A receptors, which are ligand-gated chloride channels. GABA-A receptors are pentameric, consisting of proteins from several subunit classes: alpha, beta, gamma, delta and rho. Mutations in this gene have been associated with epilepsy and febrile seizures. Multiple transcript variants encoding different isoforms have been identified for this gene. This gene encodes a gamma-aminobutyric acid (GABA) receptor. GABA is the major inhibitory neurotransmitter in the mammalian brain, where it acts at GABA-A receptors, which are ligand-gated chloride channels. GABA-A receptors are pentameric, consisting of proteins from several subunit classes: alpha, beta, gamma, delta and rho. Mutations in this gene have been associated with epilepsy and febrile seizures. Multiple transcript variants encoding different isoforms have been identified for this gene.

Synonyms:

CAE2; ECA2; GEFSP3

Note:

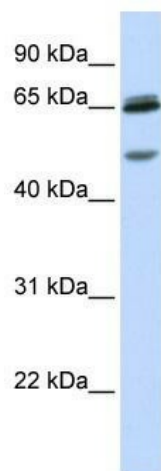
Immunogen sequence homology: Bovine: 100%; Dog: 100%; Horse: 100%; Human: 100%; Mouse: 100%; Pig: 100%; Rabbit: 100%; Rat: 100%; Chicken: 85%

Protein Families:

Druggable Genome, Ion Channels: Cys-loop Receptors, Transmembrane

Protein Pathways:

Neuroactive ligand-receptor interaction

Product images:

WB Suggested Anti-GABRG2 Antibody Titration:
0.2-1 ug/ml; ELISA Titer: 1:312500; Positive
Control: Human brain