

Product datasheet for **TA330436**

GABA A Receptor delta (GABRD) Rabbit Polyclonal Antibody

Product data:

Product Type:	Primary Antibodies
Applications:	IHC, WB
Recommended Dilution:	WB, IHC
Reactivity:	Human, Rat
Host:	Rabbit
Isotype:	IgG
Clonality:	Polyclonal
Immunogen:	The immunogen for anti-GABRD antibody: synthetic peptide directed towards the N terminal of human GABRD. Synthetic peptide located within the following region: MDAPARLLAPLLLLCAQQLRGTRAMNDIGDYVGSNLEISWLPNLDGLIAG
Formulation:	Liquid. Purified antibody supplied in 1x PBS buffer with 0.09% (w/v) sodium azide and 2% sucrose. <i>Note that this product is shipped as lyophilized powder to China customers.</i>
Conjugation:	Unconjugated
Storage:	Store at -20°C as received.
Stability:	Stable for 12 months from date of receipt.
Predicted Protein Size:	51 kDa
Gene Name:	gamma-aminobutyric acid type A receptor delta subunit
Database Link:	NP_000806 Entrez Gene 29689 Rat Entrez Gene 2563 Human O14764



[View online »](#)

Background: Gamma-aminobutyric acid (GABA) is the major inhibitory neurotransmitter in the mammalian brain where it acts at GABA-A receptors, which are ligand-gated chloride channels. Chloride conductance of these channels can be modulated by agents such as benzodiazepines that bind to the GABA-A receptor. The GABA-A receptor is generally pentameric and there are five types of subunits: alpha, beta, gamma, delta, and rho. The GABRD gene encodes the delta subunit. Gamma-aminobutyric acid (GABA) is the major inhibitory neurotransmitter in the mammalian brain where it acts at GABA-A receptors, which are ligand-gated chloride channels. Chloride conductance of these channels can be modulated by agents such as benzodiazepines that bind to the GABA-A receptor. The GABA-A receptor is generally pentameric and there are five types of subunits: alpha, beta, gamma, delta, and rho. This gene encodes the delta subunit.

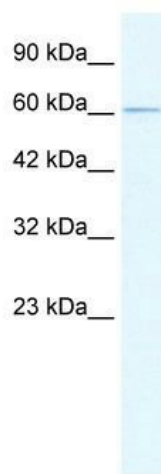
Synonyms: EIG10; EJM7; GEFSP5

Note: Immunogen sequence homology: Bovine: 100%; Dog: 100%; Human: 100%; Mouse: 100%; Rabbit: 100%; Chicken: 76%

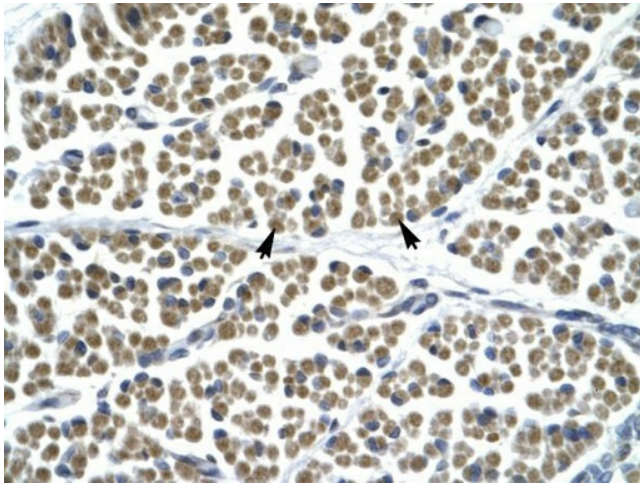
Protein Families: Druggable Genome, Ion Channels: Cys-loop Receptors, Transmembrane

Protein Pathways: Neuroactive ligand-receptor interaction

Product images:

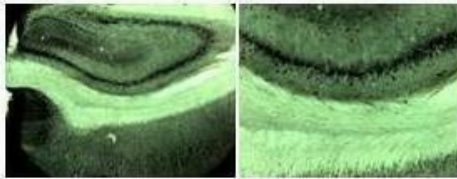


WB Suggested Anti-GABRD Antibody Titration:
0.2-1 ug/ml; Positive Control: HepG2 cell lysate



Human Muscle

GABRD



4x

10x

Sample Type : Rat brain section
 Primary Antibody Dilution : 1:1000
 Secondary Antibody : Anti-rabbit-biotin, streptavidin-diaminobenzidine
 Secondary Antibody Dilution : 1:500
 Gene Name : GABRD
 Submitted by : Dr. Amiel Rosenkranz, Rosalind Franklin University

See IHC 2 Data and Customer Feedback for more Information