

Product datasheet for **TA330435**

GABA A Receptor alpha 3 (GABRA3) Rabbit Polyclonal Antibody

Product data:

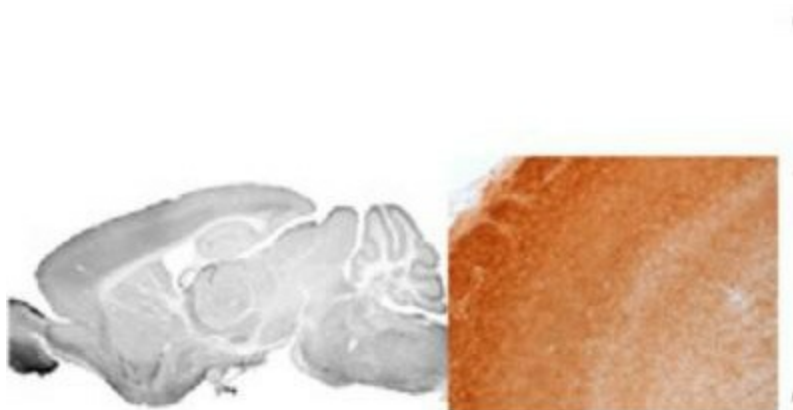
Product Type:	Primary Antibodies
Applications:	IHC
Recommended Dilution:	IHC
Reactivity:	Mouse
Host:	Rabbit
Isotype:	IgG
Clonality:	Polyclonal
Immunogen:	The immunogen for anti-GABRA3 antibody: synthetic peptide directed towards the N terminal of human GABRA3. Synthetic peptide located within the following region: GTTGQGESRRQEPGDFVKQDIGGLSPKHAPDIPDDSTDNITIFTRILDRL
Formulation:	Liquid. Purified antibody supplied in 1x PBS buffer with 0.09% (w/v) sodium azide and 2% sucrose. <i>Note that this product is shipped as lyophilized powder to China customers.</i>
Conjugation:	Unconjugated
Storage:	Store at -20°C as received.
Stability:	Stable for 12 months from date of receipt.
Predicted Protein Size:	55 kDa
Gene Name:	gamma-aminobutyric acid type A receptor alpha3 subunit
Database Link:	NP_000799 Entrez Gene 14396 Mouse P34903
Background:	GABA, the major inhibitory neurotransmitter in the vertebrate brain, mediates neuronal inhibition by binding to the gaba/benzodiazepine receptor and opening an integral chloride channel.
Synonyms:	MGC33793
Note:	Immunogen sequence homology: Bovine: 100%; Dog: 100%; Guinea pig: 100%; Horse: 100%; Mouse: 100%; Rabbit: 100%; Rat: 100%
Protein Families:	Druggable Genome, Ion Channels: Cys-loop Receptors, Transmembrane



[View online »](#)

Protein Pathways: Neuroactive ligand-receptor interaction

Product images:



mouse bulbus