

Product datasheet for **TA330434**

GABRA2 Rabbit Polyclonal Antibody

Product data:

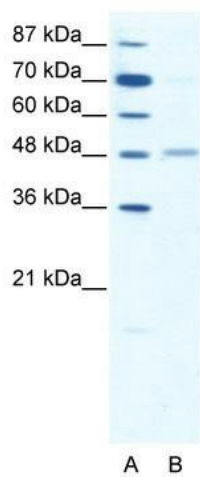
Product Type:	Primary Antibodies
Applications:	WB
Recommended Dilution:	WB
Reactivity:	Human
Host:	Rabbit
Isotype:	IgG
Clonality:	Polyclonal
Immunogen:	The immunogen for anti-GABRA2 antibody: synthetic peptide directed towards the middle region of human GABRA2. Synthetic peptide located within the following region: PMDAHSCPLKFGSYAYTTSEVTYIWTYNASDSVQVAPDGSRLNQYDLLGQ
Formulation:	Liquid. Purified antibody supplied in 1x PBS buffer with 0.09% (w/v) sodium azide and 2% sucrose. <i>Note that this product is shipped as lyophilized powder to China customers.</i>
Conjugation:	Unconjugated
Storage:	Store at -20°C as received.
Stability:	Stable for 12 months from date of receipt.
Predicted Protein Size:	51 kDa
Gene Name:	gamma-aminobutyric acid type A receptor alpha2 subunit
Database Link:	NP_000798 Entrez Gene 2555 Human P47869
Background:	GABA, the major inhibitory neurotransmitter in the vertebrate brain, mediates neuronal inhibition by binding to the gaba/benzodiazepine receptor and opening an integral chloride channel.
Synonyms:	FLJ97076
Note:	Immunogen sequence homology: Bovine: 100%; Chicken: 100%; Dog: 100%; Horse: 100%; Human: 100%; Mouse: 100%; Rabbit: 100%; Rat: 100%; African clawed frog: 80%
Protein Families:	Druggable Genome, Ion Channels: Cys-loop Receptors, Transmembrane



[View online »](#)

Protein Pathways: Neuroactive ligand-receptor interaction

Product images:



WB Suggested Anti-GABRA2 Antibody Titration:
1.25ug/ml; ELISA Titer: 1:62500; Positive Control:
HepG2 cell lysate