

## Product datasheet for **TA330433**

### CHRNA3 Rabbit Polyclonal Antibody

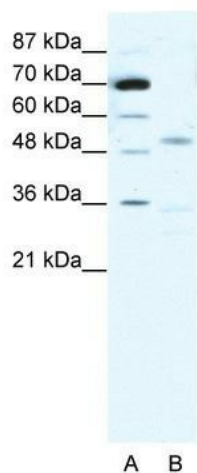
#### Product data:

Product Type:	Primary Antibodies
Applications:	WB
Recommended Dilution:	WB
Reactivity:	Human
Host:	Rabbit
Isotype:	IgG
Clonality:	Polyclonal
Immunogen:	The immunogen for anti-CHRNA3 antibody: synthetic peptide directed towards the N terminal of human CHRNA3. Synthetic peptide located within the following region: QEERLLADLMQNYDPNLRPAERDSDVNVSLKLTNLISLNEREEALTT
Formulation:	Liquid. Purified antibody supplied in 1x PBS buffer with 0.09% (w/v) sodium azide and 2% sucrose. <i>Note that this product is shipped as lyophilized powder to China customers.</i>
Conjugation:	Unconjugated
Storage:	Store at -20°C as received.
Stability:	Stable for 12 months from date of receipt.
Predicted Protein Size:	57 kDa
Gene Name:	cholinergic receptor nicotinic alpha 3 subunit
Database Link:	<a href="#">NP_000734</a> <a href="#">Entrez Gene 1136 Human P32297</a>
Background:	The CHRNA3 subunit is expressed in the soma of the majority of pyramidal cells, with the most alpha 3 immunoreactivity observed in CA2-4 and entorhinal cortex and relatively less in CA1 and subicular pyramidal cell soma.
Synonyms:	LNCR2; NACHRA3; PAOD2
Note:	Immunogen sequence homology: Dog: 100%; Human: 100%; Rabbit: 100%; Bovine: 92%; Guinea pig: 92%; Mouse: 85%; Rat: 85%
Protein Families:	Druggable Genome, Ion Channels: Cys-loop Receptors, Transmembrane



[View online »](#)

## Product images:



WB Suggested Anti-CHRNA3 Antibody Titration:  
1.0ug/ml; ELISA Titer: 1:312500; Positive Control:  
MCF7 cell lysate