

## Product datasheet for **TA330432**

### CHRNA3 Rabbit Polyclonal Antibody

#### Product data:

Product Type:	Primary Antibodies
Applications:	WB
Recommended Dilution:	WB
Reactivity:	Human
Host:	Rabbit
Isotype:	IgG
Clonality:	Polyclonal
Immunogen:	The immunogen for anti-CHRNA3 antibody: synthetic peptide directed towards the N terminal of human CHRNA3. Synthetic peptide located within the following region: NYDPNLRPAERDSDVNVSLKLTNLISLNEREEALTTNVWIEMQWCDY
Formulation:	Liquid. Purified antibody supplied in 1x PBS buffer with 0.09% (w/v) sodium azide and 2% sucrose. <i>Note that this product is shipped as lyophilized powder to China customers.</i>
Conjugation:	Unconjugated
Storage:	Store at -20°C as received.
Stability:	Stable for 12 months from date of receipt.
Predicted Protein Size:	56 kDa
Gene Name:	cholinergic receptor nicotinic gamma subunit
Database Link:	<a href="#">NP_005190</a> <a href="#">Entrez Gene 1146 Human P07510</a>



[View online »](#)

**Background:**

For background information on the acetylcholine receptor (AChR), see CHRNA1. Two forms of AChR are found in mammalian skeletal muscle cells. The mature form is predominant in innervated adult muscle and the embryonic form is present in fetal and denervated muscle. Embryonic and mature AChR differ by the replacement of the gamma subunit in the pentameric glycoprotein complex by its isoform, the epsilon subunit, which is specific to the mature AChR subtype. This switch is mediated by ARIA (acetylcholine receptor-inducing activity). For background information on the acetylcholine receptor (AChR), see CHRNA1 (MIM 100690). Two forms of AChR are found in mammalian skeletal muscle cells. The mature form is predominant in innervated adult muscle and the embryonic form is present in fetal and denervated muscle. Embryonic and mature AChR differ by the replacement of the gamma subunit in the pentameric glycoprotein complex by its isoform, the epsilon subunit (MIM 100725), which is specific to the mature AChR subtype. This switch is mediated by ARIA (acetylcholine receptor-inducing activity; MIM 142445). [supplied by OMIM].  
PRIMARYREFSEQ\_SPAN PRIMARY\_IDENTIFIER PRIMARY\_SPAN COMP 1-2187 AK125362.1 1-2187

**Synonyms:**

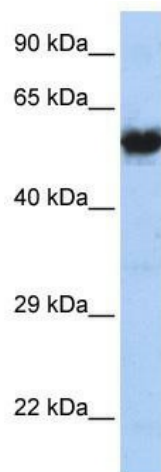
ACHRG

**Note:**

Immunogen sequence homology: Dog: 100%; Human: 100%; Rabbit: 100%; Bovine: 92%; Guinea pig: 92%; Mouse: 85%; Rat: 85%

**Protein Families:**

Druggable Genome, Ion Channels: Cys-loop Receptors, Transmembrane

**Product images:**

WB Suggested Anti-CHRNA1 Antibody; Titration: 1 ug/ml; Positive Control: MCF7 Whole Cell