

Product datasheet for **TA330429**

CHRND Rabbit Polyclonal Antibody

Product data:

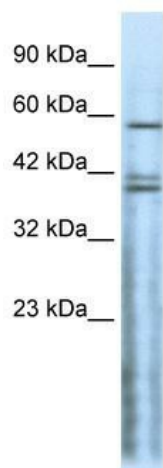
Product Type:	Primary Antibodies
Applications:	IHC, WB
Recommended Dilution:	WB, IHC
Reactivity:	Human
Host:	Rabbit
Isotype:	IgG
Clonality:	Polyclonal
Immunogen:	The immunogen for anti-CHRND antibody: synthetic peptide directed towards the N terminal of human CHRND. Synthetic peptide located within the following region: LTLGLLAALAVCGSWGLNEEERLIRHLFQEKGYNKELRPVAHKESVDVA
Formulation:	Liquid. Purified antibody supplied in 1x PBS buffer with 0.09% (w/v) sodium azide and 2% sucrose. <i>Note that this product is shipped as lyophilized powder to China customers.</i>
Conjugation:	Unconjugated
Storage:	Store at -20°C as received.
Stability:	Stable for 12 months from date of receipt.
Predicted Protein Size:	59 kDa
Gene Name:	cholinergic receptor nicotinic delta subunit
Database Link:	NP_000742 Entrez Gene 1144 Human Q07001
Background:	The acetylcholine receptor of muscle has 5 subunits of 4 different types: 2 alpha and 1 each of beta, gamma and delta subunits. After acetylcholine binding, the receptor undergoes an extensive conformation change that affects all subunits and leads to opening of an ion-conducting channel across the plasma membrane.
Synonyms:	ACHRD; CMS2A; CMS3A; CMS3B; CMS3C; FCCMS; SCCMS
Note:	Immunogen sequence homology: Dog: 100%; Human: 100%; Pig: 100%; Guinea pig: 93%; Bovine: 91%; Rabbit: 86%; Rat: 85%; Zebrafish: 78%



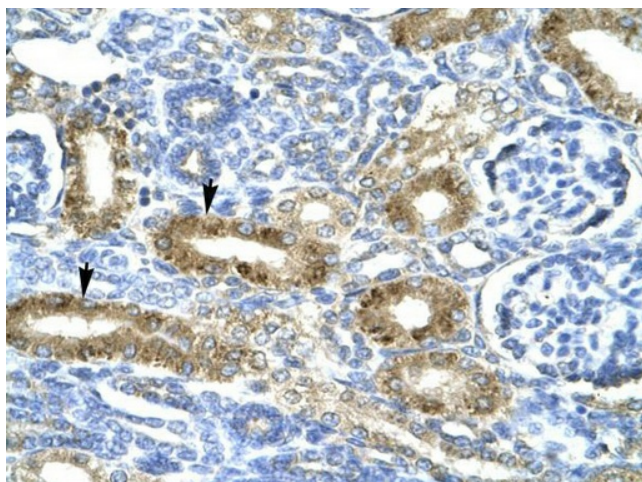
[View online »](#)

Protein Families: Druggable Genome, Ion Channels: Cys-loop Receptors, Transmembrane

Product images:



WB Suggested Anti-CHRND Antibody Titration:
0.2-1 ug/ml; ELISA Titer: 1:312500; Positive
Control: HepG2 cell lysate



Human kidney