

Product datasheet for **TA330428**

CHRNB3 Rabbit Polyclonal Antibody

Product data:

Product Type:	Primary Antibodies
Applications:	WB
Recommended Dilution:	WB
Reactivity:	Human
Host:	Rabbit
Isotype:	IgG
Clonality:	Polyclonal
Immunogen:	The immunogen for anti-CHRNB3 antibody: synthetic peptide directed towards the middle region of human CHRNB3. Synthetic peptide located within the following region: YDGMTVDLILINENVDRKDFDNGEWELNAKGMKGNRRDGVYSYPFITY
Formulation:	Liquid. Purified antibody supplied in 1x PBS buffer with 0.09% (w/v) sodium azide and 2% sucrose.
Conjugation:	Unconjugated
Storage:	Store at -20°C as received.
Stability:	Stable for 12 months from date of receipt.
Predicted Protein Size:	53 kDa
Gene Name:	cholinergic receptor nicotinic beta 3 subunit
Database Link:	NP_000740 Entrez Gene 1142 Human Q05901
Background:	Nicotinic acetylcholine receptors (nAChRs) are ligand-gated ion channels nAChRs are pentameric structures that are made up of combinations of individual subunits. CHRNB3 is one of the subunits of nAChR. Twelve neuronal nAChR subunits have been described, alpha2-alpha10 and beta2-beta4. CHRNB3 decreased the channel mean open time and burst length. There was also an increase in single channel slope conductance. On the other hand, the calcium permeability and the pharmacological properties of beta3-containing receptors differed little from those of without beta3. Dysfunction of nAChR has been linked to a number of human diseases such as schizophrenia, Alzheimer's and Parkinson's diseases. nAChRs also play a significant role in nicotine addiction.



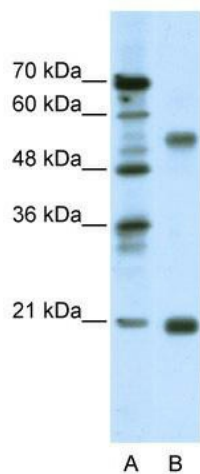
[View online »](#)

Synonyms: acetylcholine receptor; beta-3 subunit; beta 3; beta polypeptide 3; cholinergic receptor; neuronal nicotinic; nicotinic

Note: Immunogen sequence homology: Bovine: 100%; Chicken: 100%; Dog: 100%; Guinea pig: 100%; Mouse: 100%; Rabbit: 100%; Rat: 100%; Horse: 93%; African clawed frog: 76%

Protein Families: Druggable Genome, Ion Channels: Cys-loop Receptors, Transmembrane

Product images:



WB Suggested Anti-CHRN3 Antibody Titration:
0.03ug/ml; ELISA Titer: 1:1562500; Positive
Control: Jurkat cell lysate