

Product datasheet for **TA330427**

Nicotinic Acetylcholine Receptor beta 2 (CHRN2) Rabbit Polyclonal Antibody

Product data:

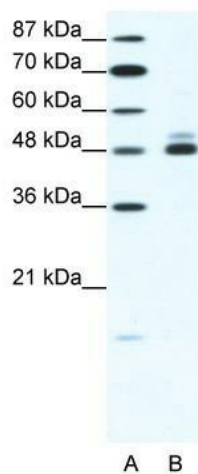
Product Type:	Primary Antibodies
Applications:	WB
Recommended Dilution:	WB
Reactivity:	Human, Mouse
Host:	Rabbit
Isotype:	IgG
Clonality:	Polyclonal
Immunogen:	The immunogen for anti-CHRN2 antibody: synthetic peptide directed towards the N terminal of human CHRN2. Synthetic peptide located within the following region: SGVWGTDTTEERLVEHLLDPSRYNKLIRPATNGSELVTVQLMVSLAQLISV
Formulation:	Liquid. Purified antibody supplied in 1x PBS buffer with 0.09% (w/v) sodium azide and 2% sucrose. <i>Note that this product is shipped as lyophilized powder to China customers.</i>
Conjugation:	Unconjugated
Storage:	Store at -20°C as received.
Stability:	Stable for 12 months from date of receipt.
Predicted Protein Size:	57 kDa
Gene Name:	cholinergic receptor nicotinic beta 2 subunit
Database Link:	NP_000739 Entrez Gene 11444 Mouse Entrez Gene 1141 Human P17787
Background:	The nicotinic acetylcholine receptors are members of a superfamily of ligand-gated ion channels that mediate fast signal transmission at synapses. Mutations in neuronal nicotinic acetylcholine receptor beta 2 subunit have been associated with autosomal dominant nocturnal frontal lobe epilepsies.
Synonyms:	EFNL3; nAChRB2
Note:	Immunogen sequence homology: Bovine: 100%; Dog: 100%; Human: 100%; Mouse: 100%; Pig: 100%; African clawed frog: 92%; Zebrafish: 83%



[View online »](#)

Protein Families: Druggable Genome, Ion Channels: Cys-loop Receptors, Transmembrane

Product images:



WB Suggested Anti-CHRN2 Antibody; Titration: 1.25 ug/ml; Positive Control: HepG2 Whole Cell