

Product datasheet for **TA330419**

CHM Rabbit Polyclonal Antibody

Product data:

Product Type:	Primary Antibodies
Applications:	WB
Recommended Dilution:	WB
Reactivity:	Human
Host:	Rabbit
Isotype:	IgG
Clonality:	Polyclonal
Immunogen:	The immunogen for anti-CHM antibody: synthetic peptide directed towards the N terminal of human CHM. Synthetic peptide located within the following region: LHVDSRSYGGNWA SFSFSGLLSWLKEYQENS DIVSDSPVWQDQILENEE
Formulation:	Liquid. Purified antibody supplied in 1x PBS buffer with 0.09% (w/v) sodium azide and 2% sucrose. <i>Note that this product is shipped as lyophilized powder to China customers.</i>
Conjugation:	Unconjugated
Storage:	Store at -20°C as received.
Stability:	Stable for 12 months from date of receipt.
Predicted Protein Size:	73 kDa
Gene Name:	CHM, Rab escort protein 1
Database Link:	NP_000381 Entrez Gene 1121 Human P24386
Background:	CHM binds unprenylated Rab proteins, presents it to the catalytic Rab GGTase dimer, and remains bound to it after the geranylgeranyl transfer reaction. The component A is thought to be regenerated by transferring its prenylated Rab back to the donor membrane. The choroideremia gene encodes for a protein, the Rab escort protein-1 (REP1), which is involved in membrane trafficking. [supplied by OMIM]. Publication Note: This RefSeq record includes a subset of the publications that are available for this gene. Please see the Entrez Gene record to access additional publications.



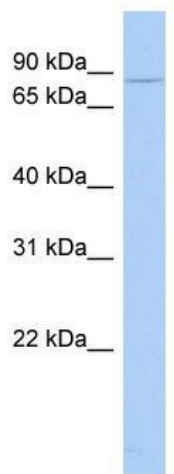
[View online »](#)

Synonyms: DXS540; GGTA; HSD-32; REP-1; TCD

Note: Immunogen sequence homology: Human: 100%; Horse: 80%

Protein Families: Druggable Genome

Product images:



WB Suggested Anti-CHM Antibody Titration: 0.2-1 ug/ml; ELISA Titer: 1:12500; Positive Control: Human Thymus