

Product datasheet for **TA330418**

Mint3 (APBA3) Rabbit Polyclonal Antibody

Product data:

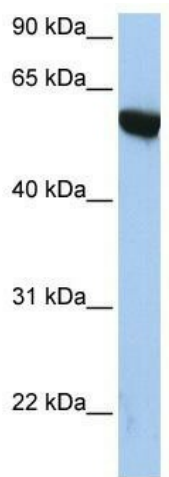
Product Type:	Primary Antibodies
Applications:	WB
Recommended Dilution:	WB
Reactivity:	Human
Host:	Rabbit
Isotype:	IgG
Clonality:	Polyclonal
Immunogen:	The immunogen for anti-APBA3 antibody: synthetic peptide directed towards the N terminal of human APBA3. Synthetic peptide located within the following region: DPDESDSPEWVEGASAEQEGSRSSSSSPEPWLETVPLVTPEPPAGAQS
Formulation:	Liquid. Purified antibody supplied in 1x PBS buffer with 0.09% (w/v) sodium azide and 2% sucrose.
Conjugation:	Unconjugated
Storage:	Store at -20°C as received.
Stability:	Stable for 12 months from date of receipt.
Predicted Protein Size:	61 kDa
Gene Name:	amyloid beta precursor protein binding family A member 3
Database Link:	NP_004877 Entrez Gene 9546 Human O96018
Background:	APBA3 is a member of the X11 protein family. It is an adapter protein that interacts with the Alzheimer's disease amyloid precursor protein. This protein is believed to be involved in signal transduction processes. This gene is a candidate gene for Alzheimer's disease. The protein encoded by this gene is a member of the X11 protein family. It is an adapter protein that interacts with the Alzheimer's disease amyloid precursor protein. This gene product is believed to be involved in signal transduction processes. This gene is a candidate gene for Alzheimer's disease.
Synonyms:	MGC:15815; mint3; X11L2



[View online »](#)

Note: Immunogen sequence homology: Human: 100%; Dog: 86%

Product images:



WB Suggested Anti-APBA3 Antibody Titration: 0.2-1 ug/ml; ELISA Titer: 1:62500; Positive Control: HepG2 cell lysate