

## Product datasheet for **TA330417**

### alpha 1 Glycine Receptor (GLRA1) Rabbit Polyclonal Antibody

#### Product data:

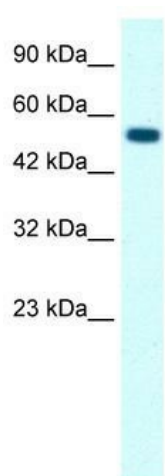
Product Type:	Primary Antibodies
Applications:	WB
Recommended Dilution:	WB
Reactivity:	Human
Host:	Rabbit
Isotype:	IgG
Clonality:	Polyclonal
Immunogen:	The immunogen for anti-GLRA1 antibody: synthetic peptide directed towards the middle region of human GLRA1. Synthetic peptide located within the following region: TMNDLIFEWQEQGAVQVADGLTLPQFILKEEKDLRYCTKHYN TGKFTCIE
Formulation:	Liquid. Purified antibody supplied in 1x PBS buffer with 0.09% (w/v) sodium azide and 2% sucrose. <i>Note that this product is shipped as lyophilized powder to China customers.</i>
Conjugation:	Unconjugated
Storage:	Store at -20°C as received.
Stability:	Stable for 12 months from date of receipt.
Predicted Protein Size:	51 kDa
Gene Name:	glycine receptor alpha 1
Database Link:	<a href="#">NP_000162</a> <a href="#">Entrez Gene 2741 Human P23415</a>
Background:	The glycine receptor is a neurotransmitter-gated ion channel. Binding of glycine to its receptor increases the chloride conductance and thus produces hyperpolarization (inhibition of neuronal firing).
Synonyms:	HKPX1; STHE
Note:	Immunogen sequence homology: Bovine: 100%; Dog: 100%; Guinea pig: 100%; Horse: 100%; Human: 100%; Mouse: 100%; Rabbit: 100%; Rat: 100%; Chicken: 93%; Zebrafish: 86%
Protein Families:	Druggable Genome, Ion Channels: Cys-loop Receptors, Transmembrane



[View online »](#)

Protein Pathways: Neuroactive ligand-receptor interaction

### Product images:



WB Suggested Anti-GLRA1 Antibody Titration: 0.2-1 ug/ml; Positive Control: Raji cell lysate GLRA1 is supported by BioGPS gene expression data to be expressed in Raji