

Product datasheet for **TA330412**

AMID (AIFM2) Rabbit Polyclonal Antibody

Product data:

Product Type:	Primary Antibodies
Applications:	IHC, WB
Recommended Dilution:	WB, IHC
Reactivity:	Human
Host:	Rabbit
Isotype:	IgG
Clonality:	Polyclonal
Immunogen:	The immunogen for anti-AIFM2 antibody: synthetic peptide directed towards the middle region of human AIFM2. Synthetic peptide located within the following region: GALTFLLSMGRNDGVGQISGFYVGRMLMVRLTKSRDLFVSTSWKTMRSPP
Formulation:	Liquid. Purified antibody supplied in 1x PBS buffer with 0.09% (w/v) sodium azide and 2% sucrose. <i>Note that this product is shipped as lyophilized powder to China customers.</i>
Conjugation:	Unconjugated
Storage:	Store at -20°C as received.
Stability:	Stable for 12 months from date of receipt.
Predicted Protein Size:	40 kDa
Gene Name:	apoptosis inducing factor, mitochondria associated 2
Database Link:	NP_116186 Entrez Gene 84883 Human Q9BRQ8
Background:	AIFM2 has significant homology to NADH oxidoreductases and the apoptosis-inducing factor PDCD8/AIF. Overexpression of this gene has been shown to induce apoptosis. The expression of this gene is found to be induced by tumor suppressor protein p53 in colon cancer cells. The protein encoded by this gene has significant homology to NADH oxidoreductases and the apoptosis-inducing factor PDCD8/AIF. Overexpression of this gene has been shown to induce apoptosis. The expression of this gene is found to be induced by tumor suppressor protein p53 in colon cancer cells.



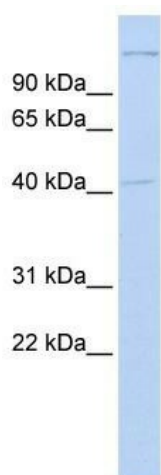
[View online »](#)

Synonyms: AMID; PRG3

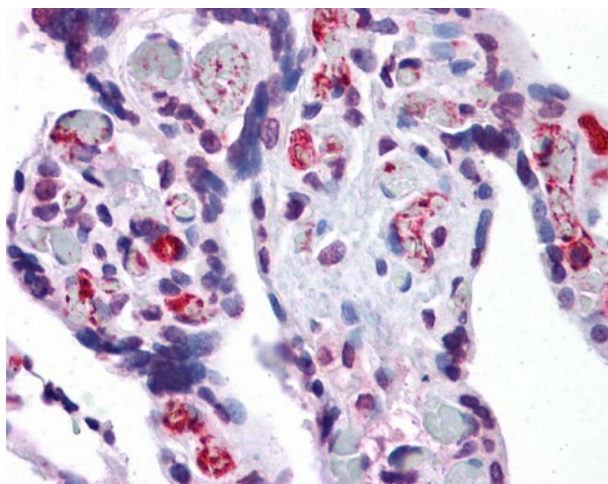
Note: Immunogen sequence homology: Human: 100%; Guinea pig: 93%; Rabbit: 93%; Chicken: 91%; Bovine: 86%; Dog: 86%; African clawed frog: 83%; Mouse: 80%; Rat: 80%

Protein Families: Druggable Genome, Transmembrane

Product images:



WB Suggested Anti-AIFM2 Antibody Titration: 0.2-1 ug/ml; ELISA Titer: 1:2500; Positive Control: Human brain



Placenta