

## Product datasheet for **TA330411**

### SFRP1 Rabbit Polyclonal Antibody

#### Product data:

Product Type:	Primary Antibodies
Applications:	WB
Recommended Dilution:	WB
Reactivity:	Human
Host:	Rabbit
Isotype:	IgG
Clonality:	Polyclonal
Immunogen:	The immunogen for anti-SFRP1 antibody: synthetic peptide directed towards the middle region of human SFRP1. Synthetic peptide located within the following region: HQLDNLSSHFLIMGRKVKSQYLLTAIHKWDKKNKEFKNFMKMKMKNHECPT
Formulation:	Liquid. Purified antibody supplied in 1x PBS buffer with 0.09% (w/v) sodium azide and 2% sucrose. <i>Note that this product is shipped as lyophilized powder to China customers.</i>
Conjugation:	Unconjugated
Storage:	Store at -20°C as received.
Stability:	Stable for 12 months from date of receipt.
Predicted Protein Size:	35 kDa
Gene Name:	secreted frizzled related protein 1
Database Link:	<a href="#">NP_003003</a> <a href="#">Entrez Gene 6422 Human</a> <a href="#">Q8N474</a>
Background:	This gene encodes a member of the SFRP family that contains a cysteine-rich domain homologous to the putative Wnt-binding site of Frizzled proteins. Members of this family act as soluble modulators of Wnt signaling; epigenetic silencing of SFRP genes leads to deregulated activation of the Wnt-pathway which is associated with cancer. This gene may also be involved in determining the polarity of photoreceptor cells in the retina. [provided by RefSeq, Sep 2009]
Synonyms:	FRP; FRP-1; FRP1; FrzA; SARP2



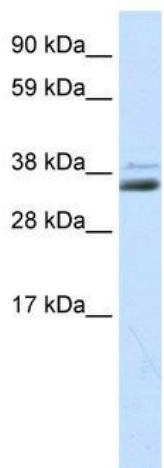
[View online »](#)

**Note:** Immunogen sequence homology: Dog: 100%; Guinea pig: 100%; Horse: 100%; Human: 100%; Mouse: 100%; Rat: 100%; Bovine: 93%; Chicken: 93%

**Protein Families:** Adult stem cells, Cancer stem cells, Druggable Genome, ES Cell Differentiation/IPS, Secreted Protein, Stem cell relevant signaling - Wnt Signaling pathway, Transmembrane

**Protein Pathways:** Wnt signaling pathway

**Product images:**



WB Suggested Anti-SFRP1 Antibody Titration: 0.3 ug/ml; ELISA Titer: 1:62500; Positive Control: Human kidney