

Product datasheet for **TA330408**

BCL2A1 Rabbit Polyclonal Antibody

Product data:

Product Type:	Primary Antibodies
Applications:	WB
Recommended Dilution:	WB
Reactivity:	Human
Host:	Rabbit
Isotype:	IgG
Clonality:	Polyclonal
Immunogen:	The immunogen for anti-BCL2A1 antibody: synthetic peptide directed towards the C terminal of human BCL2A1. Synthetic peptide located within the following region: FIMNNTGEWIRQNGGWENGFVKKFEPKSGWMTFLEVTGKICEMLSLLKQY
Formulation:	Liquid. Purified antibody supplied in 1x PBS buffer with 0.09% (w/v) sodium azide and 2% sucrose. <i>Note that this product is shipped as lyophilized powder to China customers.</i>
Conjugation:	Unconjugated
Storage:	Store at -20°C as received.
Stability:	Stable for 12 months from date of receipt.
Predicted Protein Size:	20 kDa
Gene Name:	BCL2 related protein A1
Database Link:	NP_004040 Entrez Gene 597 Human Q16548



[View online »](#)

Background: BCL2A1 is a member of the BCL-2 protein family. The proteins of this family form hetero- or homodimers and act as anti- and pro-apoptotic regulators that are involved in a wide variety of cellular activities such as embryonic development, homeostasis and tumorigenesis. The protein encoded by this gene is able to reduce the release of pro-apoptotic cytochrome c from mitochondria and block caspase activation. This gene is a direct transcription target of NF-kappa B in response to inflammatory mediators, and has been shown to be up-regulated by different extracellular signals, such as granulocyte-macrophage colony-stimulating factor (GM-CSF), CD40, phorbol ester and inflammatory cytokine TNF and IL-1, which suggests a cytoprotective function that is essential for lymphocyte activation as well as cell survival.

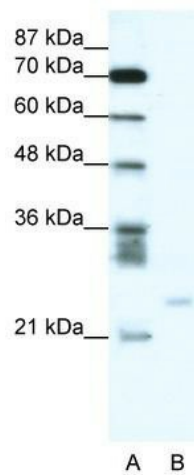
Synonyms: ACC-1; ACC-2; ACC1; ACC2; BCL2L5; BFL1; GRS; HBPA1

Note: Immunogen sequence homology: Dog: 90%; Pig: 85%; Rat: 78%

Protein Families: Druggable Genome

Protein Pathways: Metabolic pathways

Product images:



WB Suggested Anti-BCL2A1 Antibody Titration:
0.2-1 ug/ml; Positive Control: Jurkat cell lysate