

Product datasheet for **TA330407**

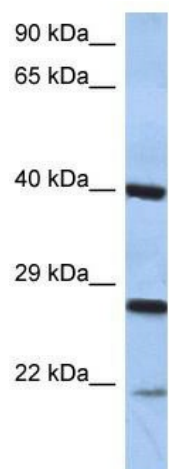
CIDE B (CIDEB) Rabbit Polyclonal Antibody

Product data:

Product Type:	Primary Antibodies
Applications:	WB
Recommended Dilution:	WB
Reactivity:	Human
Host:	Rabbit
Isotype:	IgG
Clonality:	Polyclonal
Immunogen:	The immunogen for anti-CIDEB antibody: synthetic peptide directed towards the middle region of human CIDEB. Synthetic peptide located within the following region: LGPKKVLRELLRWTSTLLQGLGHMLLGISSTLRHAVEGAEQWQQKGRLLHS
Formulation:	Liquid. Purified antibody supplied in 1x PBS buffer with 0.09% (w/v) sodium azide and 2% sucrose. <i>Note that this product is shipped as lyophilized powder to China customers.</i>
Conjugation:	Unconjugated
Storage:	Store at -20°C as received.
Stability:	Stable for 12 months from date of receipt.
Predicted Protein Size:	25 kDa
Gene Name:	cell death-inducing DFFA-like effector b
Database Link:	NP_055245 Entrez Gene 27141 Human Q9UHD4
Background:	CIDEB activates apoptosis.
Synonyms:	cell death-inducing DFFA-like effector b
Note:	Immunogen sequence homology: Human: 100%; Pig: 86%
Protein Families:	Druggable Genome



[View online »](#)

Product images:

WB Suggested Anti-CIDEB Antibody Titration: 0.2-1 ug/ml; ELISA Titer: 1:62500; Positive Control: PANC1 cell lysate