

Product datasheet for **TA330405**

SREBP2 (SREBF2) Rabbit Polyclonal Antibody

Product data:

Product Type:	Primary Antibodies
Applications:	WB
Recommended Dilution:	WB
Reactivity:	Human, Mouse
Host:	Rabbit
Isotype:	IgG
Clonality:	Polyclonal
Immunogen:	The immunogen for anti-SREBF2 antibody: synthetic peptide directed towards the middle region of human SREBF2. Synthetic peptide located within the following region: PASDSGSQAGFSPYSIDSEPGSPLLDDAKVKDEPDSPVALGMVDRSRL
Formulation:	Liquid. Purified antibody supplied in 1x PBS buffer with 0.09% (w/v) sodium azide and 2% sucrose. <i>Note that this product is shipped as lyophilized powder to China customers.</i>
Conjugation:	Unconjugated
Storage:	Store at -20°C as received.
Stability:	Stable for 12 months from date of receipt.
Predicted Protein Size:	124 kDa
Gene Name:	sterol regulatory element binding transcription factor 2
Database Link:	NP_004590 Entrez Gene 20788 Mouse Entrez Gene 6721 Human Q12772
Background:	SREBF2 is a ubiquitously expressed transcription factor that controls cholesterol homeostasis by stimulating transcription of sterol-regulated genes. This gene encodes a ubiquitously expressed transcription factor that controls cholesterol homeostasis by stimulating transcription of sterol-regulated genes. The encoded protein contains a basic helix-loop-helix-leucine zipper (bHLH-Zip) domain. Publication Note: This RefSeq record includes a subset of the publications that are available for this gene. Please see the Entrez Gene record to access additional publications.



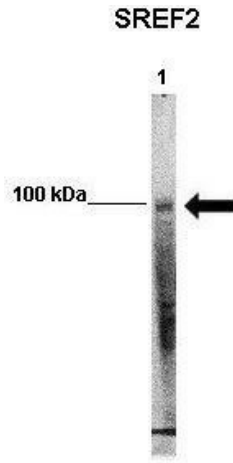
[View online »](#)

Synonyms: bHLHd2; SREBP-2; SREBP2

Note: Immunogen sequence homology: Bovine: 100%; Chicken: 100%; Dog: 100%; Guinea pig: 100%; Horse: 100%; Human: 100%; Rat: 100%

Protein Families: Druggable Genome, Transcription Factors

Product images:



WB Suggested Anti-SREBF2 Antibody Titration: 0.2-1 ug/ml; ELISA Titer: 1:62500; Positive Control: Raji cell lysate SREBF2 is strongly supported by BioGPS gene expression data to be expressed in Human Raji cells



WB Suggested Anti-SREBF2 Antibody ; Positive Control: Lane 1: 50ug mouse glomerular endothelial lysate; Primary Antibody Dilution : 1:1000; Secondary Antibody : Anti-rabbit-HRP; Secondary Antibody Dilution : 1:5000; Submitted by: Xiaoxin Wang, UC Denver