

## Product datasheet for **TA330404**

### RGS9 Rabbit Polyclonal Antibody

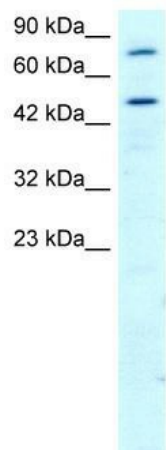
#### Product data:

Product Type:	Primary Antibodies
Applications:	IHC, WB
Recommended Dilution:	WB, IHC
Reactivity:	Human
Host:	Rabbit
Isotype:	IgG
Clonality:	Polyclonal
Immunogen:	The immunogen for anti-RGS9 antibody: synthetic peptide directed towards the N terminal of human RGS9. Synthetic peptide located within the following region: MYYQQALMRSTVKSSVSLGGIVKYSEQFSSNDAIMSGCLPSNPWITDDTQ
Formulation:	Liquid. Purified antibody supplied in 1x PBS buffer with 0.09% (w/v) sodium azide and 2% sucrose.
Conjugation:	Unconjugated
Storage:	Store at -20°C as received.
Stability:	Stable for 12 months from date of receipt.
Predicted Protein Size:	49 kDa
Gene Name:	regulator of G-protein signaling 9
Database Link:	<a href="#">NP_003826</a> <a href="#">Entrez Gene 8787 Human</a> <a href="#">O75916</a>
Background:	RGS9 is a member of the RGS family of signaling proteins that suppress the activity of G proteins by promoting their deactivation.
Synonyms:	PERRS; RGS9L
Note:	Immunogen sequence homology: Bovine: 100%; Dog: 100%; Horse: 100%; Human: 100%; Mouse: 100%; Rabbit: 100%; Rat: 100%
Protein Families:	Druggable Genome

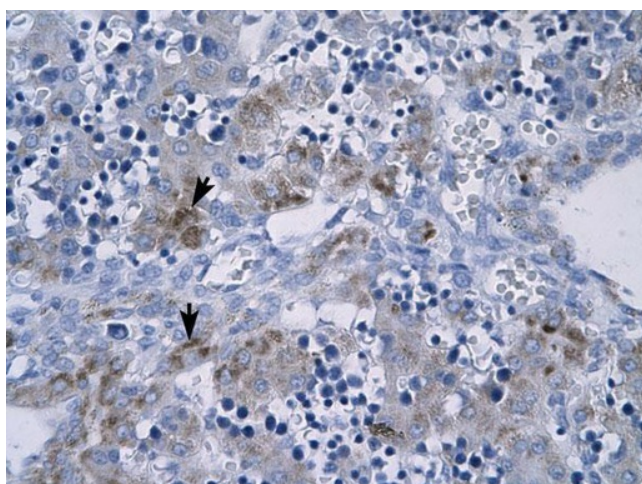


[View online »](#)

Product images:



WB Suggested Anti-RGS9 Antibody Titration: 2.0ug/ml; Positive Control: HepG2 cell lysate



Human Liver