

Product datasheet for **TA330403**

Caveolin 3 (CAV3) Rabbit Polyclonal Antibody

Product data:

Product Type:	Primary Antibodies
Applications:	IHC, WB
Recommended Dilution:	IHC, WB
Reactivity:	Human
Host:	Rabbit
Isotype:	IgG
Clonality:	Polyclonal
Immunogen:	The immunogen for anti-CAV3 antibody: synthetic peptide directed towards the N terminal of human CAV3. Synthetic peptide located within the following region: MMAEEHTDLEAQIVKDIHCKEIDLVNRDPKNINEDIVKVFEDVIAEPPV
Formulation:	Liquid. Purified antibody supplied in 1x PBS buffer with 0.09% (w/v) sodium azide and 2% sucrose. <i>Note that this product is shipped as lyophilized powder to China customers.</i>
Conjugation:	Unconjugated
Storage:	Store at -20°C as received.
Stability:	Stable for 12 months from date of receipt.
Predicted Protein Size:	17 kDa
Gene Name:	caveolin 3
Database Link:	NP_001225 Entrez Gene 859 Human P56539



[View online »](#)

Background: CAV3 is a caveolin family member, which functions as a component of the caveolae plasma membranes found in most cell types. Caveolin proteins are proposed to be scaffolding proteins for organizing and concentrating certain caveolin-interacting molecules. Mutations identified in this gene lead to interference with protein oligomerization or intra-cellular routing, disrupting caveolae formation and resulting in Limb-Girdle muscular dystrophy type-1C (LGMD-1C), hyperCKemia or rippling muscle disease (RMD). Alternative splicing has been identified for this locus, with inclusion or exclusion of a differentially spliced intron. In addition, transcripts utilize multiple polyA sites and contain two potential translation initiation sites.

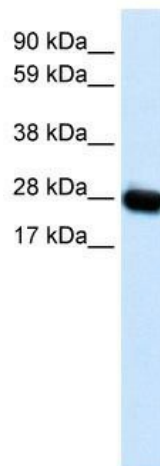
Synonyms: LGMD1C; LQT9; VIP-21; VIP21

Note: Immunogen sequence homology: Bovine: 100%; Human: 100%; Pig: 92%; Mouse: 84%; Rat: 84%

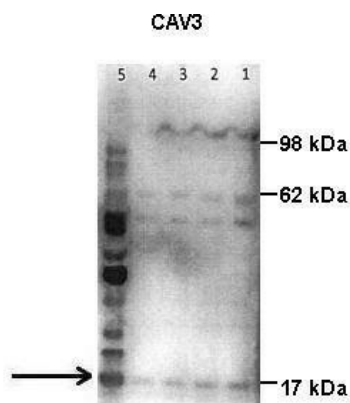
Protein Families: Druggable Genome, Transmembrane

Protein Pathways: Focal adhesion

Product images:

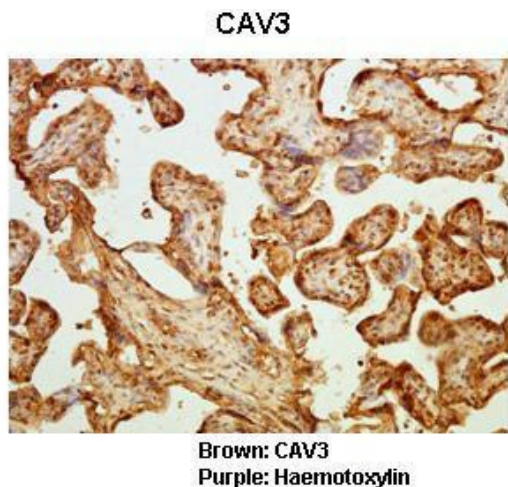


WB Suggested Anti-CAV3 Antibody Titration: 0.2-1 ug/ml; Positive Control: Human muscle



Lanes: Lane 1: 50 ug human placental tissue lysate; Lane 2: 40 ug human placental tissue lysate; Lane 3: 30 ug human placental tissue lysate; Lane 4: 20 ug human placental tissue lysate; Lane 5: 20 ug human myometrial tissue lysate; Primary Antibody Dilution:

See Immunoblot 2 Data and Customer Feedback for more information



Sample Type : Human placental tissue Primary Antibody Dilution : 1:50 Secondary Antibody : Goat anti rabbit-HRP Secondary Antibody Dilution : 1:10,000 Color/Signal Descriptions : Brown: CAV3 Purple: Haemotoxylin Gene Name : CAV3 Submitted by : Dr. Hiten D. Mi