

## Product datasheet for **TA330400**

### MMP10 Rabbit Polyclonal Antibody

#### Product data:

|                         |   |
|-------------------------|---|
| Product Type:           | Primary Antibodies  |
| Applications:           | WB  |
| Recommended Dilution:   | WB  |
| Reactivity:             | Human   |
| Host:                   | Rabbit  |
| Isotype:                | IgG   |
| Clonality:              | Polyclonal  |
| Immunogen:              | The immunogen for anti-MMP10 antibody: synthetic peptide directed towards the N terminal of human MMP10. Synthetic peptide located within the following region:<br>MMHLAFLVLLCLPVCSAYPLSGAAKEEDSNKDLAQQYLEKYNNLEKDVKQ   |
| Formulation:            | Liquid. Purified antibody supplied in 1x PBS buffer with 0.09% (w/v) sodium azide and 2% sucrose.<br><i>Note that this product is shipped as lyophilized powder to China customers.</i>   |
| Conjugation:            | Unconjugated  |
| Storage:                | Store at -20°C as received.   |
| Stability:              | Stable for 12 months from date of receipt.  |
| Predicted Protein Size: | 54 kDa  |
| Gene Name:              | matrix metalloproteinase 10   |
| Database Link:          | <a href="#">NP_002416</a><br><a href="#">Entrez Gene 4319 Human P09238</a>  |
| Background:             | Proteins of the matrix metalloproteinase (MMP) family are involved in the breakdown of extracellular matrix in normal physiological processes, such as embryonic development, reproduction, and tissue remodeling, as well as in disease processes, such as arthritis and metastasis. Most MMP's are secreted as inactive proproteins which are activated when cleaved by extracellular proteinases. The enzyme encoded by this gene degrades proteoglycans and fibronectin. The gene is part of a cluster of MMP genes which localize to chromosome 11q22.3. |



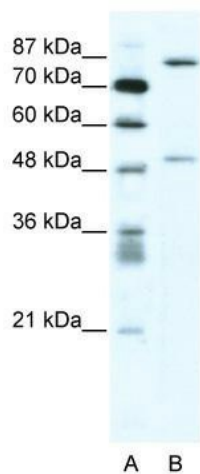
[View online »](#)

**Synonyms:** SL-2; STMY2

**Note:** Immunogen sequence homology: Human: 100%

**Protein Families:** Druggable Genome, Protease

**Product images:**



WB Suggested Anti-MMP10 Antibody Titration:  
2.5ug/ml; Positive Control: Jurkat cell lysate