

Product datasheet for **TA330398**

RGS10 Rabbit Polyclonal Antibody

Product data:

Product Type:	Primary Antibodies
Applications:	WB
Recommended Dilution:	WB
Reactivity:	Human
Host:	Rabbit
Isotype:	IgG
Clonality:	Polyclonal
Immunogen:	The immunogen for anti-RGS10 antibody: synthetic peptide directed towards the middle region of human RGS10. Synthetic peptide located within the following region: DQIFNLMKYDSYSRFLKSDLFLKHKRTEEEEEEDLPDAQTAAKRASRIYNT
Formulation:	Liquid. Purified antibody supplied in 1x PBS buffer with 0.09% (w/v) sodium azide and 2% sucrose. <i>Note that this product is shipped as lyophilized powder to China customers.</i>
Conjugation:	Unconjugated
Storage:	Store at -20°C as received.
Stability:	Stable for 12 months from date of receipt.
Predicted Protein Size:	21 kDa
Gene Name:	regulator of G-protein signaling 10
Database Link:	NP_001005339 Entrez Gene 6001 Human O43665



[View online »](#)

Background:

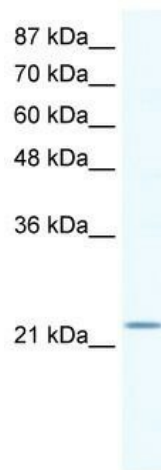
Regulator of G protein signaling (RGS) family members are regulatory molecules that act as GTPase activating proteins (GAPs) for G alpha subunits of heterotrimeric G proteins. RGS proteins are able to deactivate G protein subunits of the Gi alpha, Go alpha and Gq alpha subtypes. They drive G proteins into their inactive GDP-bound forms. Regulator of G protein signaling 10 belongs to this family. All RGS proteins share a conserved 120-amino acid sequence termed the RGS domain. This protein associates specifically with the activated forms of the two related G-protein subunits, G-alpha_{i3} and G-alpha_z but fails to interact with the structurally and functionally distinct G-alpha subunits. Regulator of G protein signaling 10 protein is localized in the nucleus. Two transcript variants encoding different isoforms have been found for this gene.

Synonyms:

OTTHUMP00000020597; OTTHUMP00000069158; regulator of G-protein signaling 10; regulator of G-protein signalling 10

Note:

Immunogen sequence homology: Dog: 100%; Guinea pig: 100%; Horse: 100%; Human: 100%; Rabbit: 90%; Rat: 90%; Bovine: 81%

Product images:

WB Suggested Anti-RGS10 Antibody; Titration: 1.25 ug/ml; Positive Control: Jurkat Whole Cell
There is BioGPS gene expression data showing that RGS10 is expressed in Jurkat