

## Product datasheet for TA330397

### RGS10 Rabbit Polyclonal Antibody

#### Product data:

Product Type:	Primary Antibodies
Applications:	FC, WB
Recommended Dilution:	WB, FACS
Reactivity:	Human, Mouse
Host:	Rabbit
Isotype:	IgG
Clonality:	Polyclonal
Immunogen:	The immunogen for anti-RGS10 antibody: synthetic peptide directed towards the middle region of human RGS10. Synthetic peptide located within the following region: DQIFNLMKYDSYSRFLKSDLFLKHKRTEEEEEEDLPDAQTAAKRASRIYNT
Formulation:	Liquid. Purified antibody supplied in 1x PBS buffer with 0.09% (w/v) sodium azide and 2% sucrose. <i>Note that this product is shipped as lyophilized powder to China customers.</i>
Conjugation:	Unconjugated
Storage:	Store at -20°C as received.
Stability:	Stable for 12 months from date of receipt.
Predicted Protein Size:	21 kDa
Gene Name:	regulator of G-protein signaling 10
Database Link:	<a href="#">NP_001005339</a> <a href="#">Entrez Gene 67865 Mouse</a> <a href="#">Entrez Gene 6001 Human</a> <a href="#">O43665</a>
Background:	RGS10 inhibits signal transduction by increasing the GTPASE activity of G protein alpha subunits thereby driving them into their inactive GDP-bound form. It associates specifically with the activated forms of the G protein subunits G(I)-ALPHA and G(Z)- alpha but fails to interact with the structurally and functionally distinct G(S)-alpha subunit. Activity on G(Z)-alpha is inhibited by palmitoylation of the G-protein.
Synonyms:	OTTHUMP00000020597; OTTHUMP00000069158; regulator of G-protein signaling 10; regulator of G-protein signalling 10



[View online »](#)

**Note:** Immunogen sequence homology: Dog: 100%; Guinea pig: 100%; Horse: 100%; Human: 100%; Rabbit: 90%; Rat: 90%; Bovine: 81%

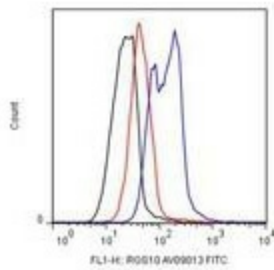
**Product images:**



WB Suggested Anti-RGS10 Antibody Titration: 0.2-1 ug/ml; ELISA Titer: 1:1562500; Positive Control: Jurkat cell lysate. There is BioGPS gene expression data showing that RGS10 is expressed in Jurkat

1 ug/ml primary Ab  
Rb anti GT secondary Ab

— Isotype  
— WT  
— KO



bone marrow derived monocytes

Submitted by:  
Malu Tansey  
Physiology Dept  
Emory University