

Product datasheet for **TA330389**

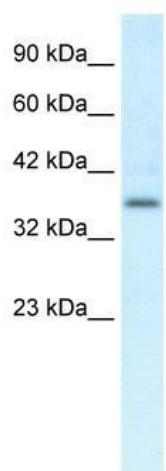
CMKLR1 Rabbit Polyclonal Antibody

Product data:

Product Type:	Primary Antibodies
Applications:	WB
Recommended Dilution:	WB
Reactivity:	Human
Host:	Rabbit
Isotype:	IgG
Clonality:	Polyclonal
Immunogen:	The immunogen for anti-CMKLR1 antibody: synthetic peptide directed towards the C terminal of human CMKLR1. Synthetic peptide located within the following region: KKFKVALFSRLVNALSEDTGHSSYPHSRFTKMSSMNERTSMNERETGML
Formulation:	Liquid. Purified antibody supplied in 1x PBS buffer with 0.09% (w/v) sodium azide and 2% sucrose. <i>Note that this product is shipped as lyophilized powder to China customers.</i>
Conjugation:	Unconjugated
Storage:	Store at -20°C as received.
Stability:	Stable for 12 months from date of receipt.
Predicted Protein Size:	42 kDa
Gene Name:	chemerin chemokine-like receptor 1
Database Link:	NP_004063 Entrez Gene 1240 Human Q99788
Background:	CMKLR1 mediates the Resolvin E1 signal to attenuate nuclear factor-kappaB.
Synonyms:	CHEMERINR; ChemR23; DEZ; RVER1
Note:	Immunogen sequence homology: Human: 100%; Mouse: 93%; Rat: 93%
Protein Families:	Druggable Genome, GPCR, Transmembrane



[View online »](#)

Product images:

WB Suggested Anti-CMKLR1 Antibody Titration:
0.2-1 ug/ml; Positive Control: HepG2 cell lysate