

## Product datasheet for **TA330388**

### Macrophage Inflammatory Protein 4 (CCL18) Rabbit Polyclonal Antibody

#### Product data:

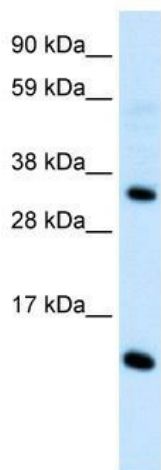
Product Type:	Primary Antibodies
Applications:	IHC, WB
Recommended Dilution:	WB, IHC
Reactivity:	Human
Host:	Rabbit
Isotype:	IgG
Clonality:	Polyclonal
Immunogen:	The immunogen for anti-CCL18 antibody: synthetic peptide directed towards the middle region of human CCL18. Synthetic peptide located within the following region: PQKFIVDYSETSPQCPKPGVILLTKRGRQICADPNKKWVQKYISDLKLNA
Formulation:	Liquid. Purified antibody supplied in 1x PBS buffer with 0.09% (w/v) sodium azide and 2% sucrose. <i>Note that this product is shipped as lyophilized powder to China customers.</i>
Conjugation:	Unconjugated
Storage:	Store at -20°C as received.
Stability:	Stable for 12 months from date of receipt.
Predicted Protein Size:	10 kDa
Gene Name:	C-C motif chemokine ligand 18
Database Link:	<a href="#">NP_002979</a> <a href="#">Entrez Gene 6362 Human P55774</a>
Background:	CCL18 is one of several Cys-Cys (CC) cytokine genes clustered on the q arm of chromosome 17. Cytokines are a family of secreted proteins involved in immunoregulatory and inflammatory processes. The CC cytokines are proteins characterized by two adjacent cysteines. The cytokine encoded by CCL18 displays chemotactic activity for naive T cells, CD4+ and CD8+ T cells and nonactivated lymphocytes, but not for monocytes or granulocytes. This chemokine attracts naive T lymphocytes toward dendritic cells and activated macrophages in lymph nodes. It may play a role in both humoral and cell-mediated immunity responses.



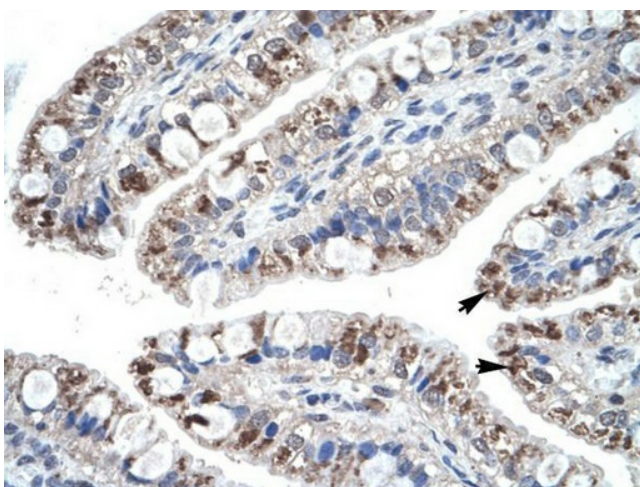
[View online »](#)

**Synonyms:** AMAC-1; AMAC1; CKb7; DC-CK1; DCCK1; MIP-4; PARC; SCYA18  
**Note:** Immunogen sequence homology: Human: 100%  
**Protein Families:** Druggable Genome, Secreted Protein  
**Protein Pathways:** Chemokine signaling pathway, Cytokine-cytokine receptor interaction

**Product images:**



WB Suggested Anti-CCL18 Antibody Titration: 0.2-1 ug/ml; ELISA Titer: 1:62500; Positive Control: Human Thymus



Human Intestine