

Product datasheet for **TA330386**

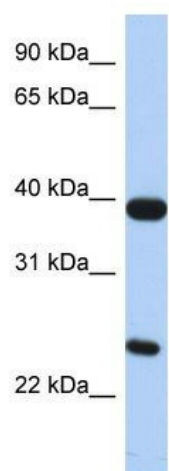
GPR15 Rabbit Polyclonal Antibody

Product data:

Product Type:	Primary Antibodies
Applications:	WB
Recommended Dilution:	WB
Reactivity:	Human
Host:	Rabbit
Isotype:	IgG
Clonality:	Polyclonal
Immunogen:	The immunogen for anti-GPR15 antibody: synthetic peptide directed towards the N terminal of human GPR15. Synthetic peptide located within the following region: FIINLAASDFIFLVTLPLWVDKEASLGLWRTGSFLCKGSSYIMISVNMHCS
Formulation:	Liquid. Purified antibody supplied in 1x PBS buffer with 0.09% (w/v) sodium azide and 2% sucrose. <i>Note that this product is shipped as lyophilized powder to China customers.</i>
Conjugation:	Unconjugated
Storage:	Store at -20°C as received.
Stability:	Stable for 12 months from date of receipt.
Predicted Protein Size:	41 kDa
Gene Name:	G protein-coupled receptor 15
Database Link:	NP_005281 Entrez Gene 2838 Human P49685
Background:	GPR15 is a probable chemokine receptor. GPR15 is also an alternative coreceptor with CD4 for HIV-1 infection.
Synonyms:	BOB
Note:	Immunogen sequence homology: Bovine: 100%; Human: 100%; Mouse: 100%; Pig: 93%; Rat: 93%; Dog: 86%; Chicken: 80%
Protein Families:	Druggable Genome, GPCR, Transmembrane



[View online »](#)

Product images:

WB Suggested Anti-GPR15 Antibody Titration: 0.2-1 ug/ml; ELISA Titer: 1:62500; Positive Control: Human Small Intestine