

Product datasheet for **TA330385**

GPR18 Rabbit Polyclonal Antibody

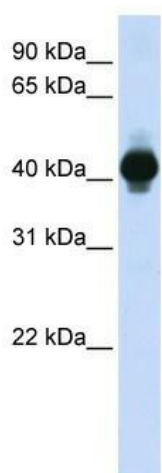
Product data:

Product Type:	Primary Antibodies
Applications:	WB
Recommended Dilution:	WB
Reactivity:	Human
Host:	Rabbit
Isotype:	IgG
Clonality:	Polyclonal
Immunogen:	The immunogen for anti-GPR18 antibody: synthetic peptide directed towards the middle region of human GPR18. Synthetic peptide located within the following region: GVWIMTLTTTTPLLLLYKDPDKDSTPATCLKISDIYKAVNVNLNLRLLT
Formulation:	Liquid. Purified antibody supplied in 1x PBS buffer with 0.09% (w/v) sodium azide and 2% sucrose. <i>Note that this product is shipped as lyophilized powder to China customers.</i>
Conjugation:	Unconjugated
Storage:	Store at -20°C as received.
Stability:	Stable for 12 months from date of receipt.
Predicted Protein Size:	38 kDa
Gene Name:	G protein-coupled receptor 18
Database Link:	NP_005283 Entrez Gene 2841 Human Q14330
Background:	GPR18 is receptor for N-arachidonyl glycine. The activity of this receptor is mediated by G proteins which inhibit adenylyl cyclase. It may contribute to regulation of the immune system. N-arachidonylglycine is a natural ligand for GPR18.
Synonyms:	G protein-coupled receptor 18; OTTHUMP00000018613
Note:	Immunogen sequence homology: Human: 100%
Protein Families:	Druggable Genome, GPCR, Transmembrane



[View online »](#)

Product images:



WB Suggested Anti-GPR18 Antibody Titration: 0.2-1 ug/ml; ELISA Titer: 1:312500; Positive Control: Human Muscle