

## Product datasheet for **TA330383**

### SDF1 (CXCL12) Rabbit Polyclonal Antibody

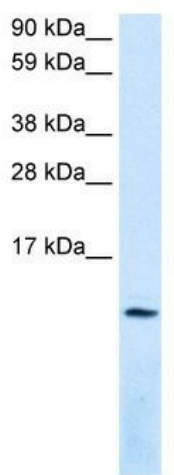
#### Product data:

Product Type:	Primary Antibodies
Applications:	WB
Recommended Dilution:	WB
Reactivity:	Human, Mouse
Host:	Rabbit
Isotype:	IgG
Clonality:	Polyclonal
Immunogen:	The immunogen for anti-CXCL12 antibody: synthetic peptide directed towards the middle region of human CXCL12. Synthetic peptide located within the following region: VKHLKILNTPNCALQIVARLKNNNRQVCIDPKLKWIQEYLEKALNKRFKM
Formulation:	Liquid. Purified antibody supplied in 1x PBS buffer with 0.09% (w/v) sodium azide and 2% sucrose. <i>Note that this product is shipped as lyophilized powder to China customers.</i>
Conjugation:	Unconjugated
Storage:	Store at -20°C as received.
Stability:	Stable for 12 months from date of receipt.
Predicted Protein Size:	11 kDa
Gene Name:	C-X-C motif chemokine ligand 12
Database Link:	<a href="#">NP_000600</a> <a href="#">Entrez Gene 20315 Mouse</a> <a href="#">Entrez Gene 6387 Human</a> <a href="#">P48061</a>
Background:	Stromal cell-derived factors 1-alpha and 1-beta are small cytokines that belong to the intercrine family, members of which activate leukocytes and are often induced by proinflammatory stimuli such as lipopolysaccharide, TNF, or IL1. The intercrines are characterized by the presence of 4 conserved cysteines which form 2 disulfide bonds. They can be classified into 2 subfamilies. In the CC subfamily, which includes beta chemokine, the cysteine residues are adjacent to each other. In the CXC subfamily, which includes alpha chemokine, they are separated by an intervening amino acid. The SDF1 proteins belong to the latter group.



[View online »](#)

<b>Synonyms:</b>	IRH; PBSF; SCYB12; SDF1; TLSF; TPAR1
<b>Note:</b>	Immunogen sequence homology: Chicken: 100%; Dog: 100%; Pig: 100%; Bovine: 90%; Rat: 90%
<b>Protein Families:</b>	Druggable Genome, ES Cell Differentiation/IPS, Secreted Protein
<b>Protein Pathways:</b>	Axon guidance, Chemokine signaling pathway, Cytokine-cytokine receptor interaction, Leukocyte transendothelial migration

**Product images:**

WB Suggested Anti-CXCL12 Antibody Titration:  
0.2-1 ug/ml; Positive Control: Human Lung