

Product datasheet for **TA330382**

Bonzo (CXCR6) Rabbit Polyclonal Antibody

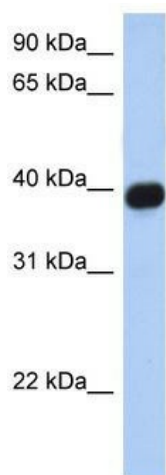
Product data:

| | |
|-------------------------|--|
| Product Type: | Primary Antibodies |
| Applications: | WB |
| Recommended Dilution: | WB |
| Reactivity: | Human |
| Host: | Rabbit |
| Isotype: | IgG |
| Clonality: | Polyclonal |
| Immunogen: | The immunogen for anti-CXCR6 antibody: synthetic peptide directed towards the N terminal of human CXCR6. Synthetic peptide located within the following region: AEHDYHEDYGFSSFNDSQEEHQDFLQFSKVFLPCMYLVFVCGLVGNSL |
| Formulation: | Liquid. Purified antibody supplied in 1x PBS buffer with 0.09% (w/v) sodium azide and 2% sucrose. <i>Note that this product is shipped as lyophilized powder to China customers.</i> |
| Conjugation: | Unconjugated |
| Storage: | Store at -20°C as received. |
| Stability: | Stable for 12 months from date of receipt. |
| Predicted Protein Size: | 39 kDa |
| Gene Name: | C-X-C motif chemokine receptor 6 |
| Database Link: | NP_006555 Entrez Gene 10663 Human O00574 |
| Background: | CXCR6 is a receptor for the C-X-C chemokine CXCL16. It is used as a coreceptor by SIVs and by strains of HIV-2 and m-tropic HIV-1. The CXCR6/AKT/mTOR pathway plays a central role in the development of prostate cancer. CXCR6 and CXCR3 act coordinately with respective ligands and are involved in the pathophysiology of Juvenile Idiopathic Arthritis-associated inflammatory processes. The CXCL16-CXCR6-system express in human schwannomas of different localization and in malignant peripheral nerve sheath tumors. The protein may play an important role in the retention of T cells within the lung. |



[View online »](#)

| | |
|--------------------------|---|
| Synonyms: | BONZO; CD186; STRL33; TYMSTR |
| Note: | Immunogen sequence homology: Human: 100% |
| Protein Families: | Druggable Genome, GPCR, Transmembrane |
| Protein Pathways: | Chemokine signaling pathway, Cytokine-cytokine receptor interaction |

Product images:

WB Suggested Anti-CXCR6 Antibody Titration: 0.2-1 ug/ml; Positive Control: Human brain