

## Product datasheet for **TA330374**

### E2F1 Rabbit Polyclonal Antibody

#### Product data:

|                         |  |
|-------------------------|--|
| Product Type:           | Primary Antibodies   |
| Applications:           | WB   |
| Recommended Dilution:   | WB   |
| Reactivity:             | Human  |
| Host:                   | Rabbit   |
| Isotype:                | IgG  |
| Clonality:              | Polyclonal   |
| Immunogen:              | The immunogen for anti-E2F1 antibody: synthetic peptide directed towards the C terminal of human E2F1. Synthetic peptide located within the following region:<br>REDFSGLLPEEFISLSPPEALDYHFGLEEGEGIRDLDLDCDFGDLTPLDF  |
| Formulation:            | Liquid. Purified antibody supplied in 1x PBS buffer with 0.09% (w/v) sodium azide and 2% sucrose.<br><i>Note that this product is shipped as lyophilized powder to China customers.</i>  |
| Conjugation:            | Unconjugated   |
| Storage:                | Store at -20°C as received.  |
| Stability:              | Stable for 12 months from date of receipt.   |
| Predicted Protein Size: | 47 kDa   |
| Gene Name:              | E2F transcription factor 1   |
| Database Link:          | <a href="#">NP_005216</a><br><a href="#">Entrez Gene 1869 Human Q01094</a>   |
| Background:             | The protein encoded by E2F1 is a member of the E2F family of transcription factors. The E2F family plays a crucial role in the control of cell cycle and action of tumor suppressor proteins and is also a target of the transforming proteins of small DNA tumor viruses. This protein binds preferentially to retinoblastoma protein pRB in a cell-cycle dependent manner. It can mediate both cell proliferation and p53-dependent/independent apoptosis. |
| Synonyms:               | E2F-1; RBAP1; RBBP3; RBP3  |



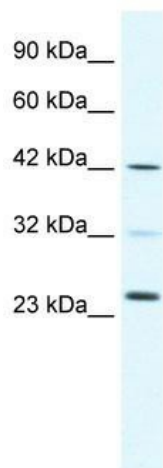
[View online »](#)

**Note:** Immunogen sequence homology: Dog: 100%; Guinea pig: 100%; Horse: 100%; Human: 100%; Mouse: 100%; Pig: 100%; Rabbit: 100%; Rat: 100%

**Protein Families:** Druggable Genome, Transcription Factors

**Protein Pathways:** Bladder cancer, Cell cycle, Chronic myeloid leukemia, Glioma, Melanoma, Non-small cell lung cancer, Pancreatic cancer, Pathways in cancer, Prostate cancer, Small cell lung cancer

### Product images:



WB Suggested Anti-E2F1 Antibody Titration: 0.2-1 ug/ml; Positive Control: Daudi cell lysate E2F1 is strongly supported by BioGPS gene expression data to be expressed in Human Daudi cells