

## Product datasheet for **TA330372**

### CDK8 Rabbit Polyclonal Antibody

#### Product data:

Product Type:	Primary Antibodies
Applications:	WB
Recommended Dilution:	WB
Reactivity:	Human
Host:	Rabbit
Isotype:	IgG
Clonality:	Polyclonal
Immunogen:	The immunogen for anti-CDK8 antibody: synthetic peptide directed towards the C terminal of human CDK8. Synthetic peptide located within the following region: GLIMTSDYQRSNPAAAYPNPGPSTSQPQSSMGYSATSQPPQYSHQTHRY
Formulation:	Liquid. Purified antibody supplied in 1x PBS buffer with 0.09% (w/v) sodium azide and 2% sucrose. <i>Note that this product is shipped as lyophilized powder to China customers.</i>
Conjugation:	Unconjugated
Storage:	Store at -20°C as received.
Stability:	Stable for 12 months from date of receipt.
Predicted Protein Size:	53 kDa
Gene Name:	cyclin-dependent kinase 8
Database Link:	<a href="#">NP_001251</a> <a href="#">Entrez Gene 1024 Human P49336</a>



[View online »](#)

**Background:**

The protein encoded by CDK8 is a member of the cyclin-dependent protein kinase (CDK) family. CDK family members are highly similar to the gene products of *Saccharomyces cerevisiae* cdc28, and *Schizosaccharomyces pombe* cdc2, and are known to be important regulators of cell cycle progression. This kinase and its regulatory subunit cyclin C are components of the RNA polymerase II holoenzyme complex, which phosphorylates the carboxy-terminal domain (CTD) of the largest subunit of RNA polymerase II. This kinase has also been shown to regulate transcription by targeting the CDK7/cyclin H subunits of the general transcription initiation factor IIH (TFIIH), thus providing a link between the 'Mediator-like' protein complexes and the basal transcription machinery.

**Synonyms:**

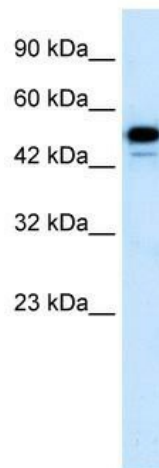
K35

**Note:**

Immunogen sequence homology: African clawed frog: 100%; Bovine: 100%; Chicken: 100%; Dog: 100%; Horse: 100%; Human: 100%; Mouse: 100%; Pig: 100%; Rabbit: 100%; Zebrafish: 100%

**Protein Families:**

Druggable Genome, Protein Kinase, Transcription Factors

**Product images:**

WB Suggested Anti-CDK8 Antibody Titration: 1.25 ug/ml; ELISA Titer: 1:12500; Positive Control: HepG2 cell lysate