

Product datasheet for **TA330371**

Cullin 1 (CUL1) Rabbit Polyclonal Antibody

Product data:

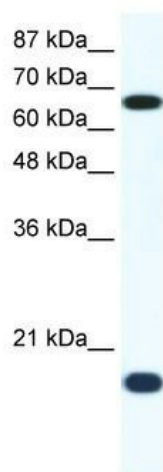
Product Type:	Primary Antibodies
Applications:	WB
Recommended Dilution:	WB
Reactivity:	Human
Host:	Rabbit
Isotype:	IgG
Clonality:	Polyclonal
Immunogen:	The immunogen for anti-CUL1 antibody: synthetic peptide directed towards the C terminal of human CUL1. Synthetic peptide located within the following region: HQQLLGEVLTQLSSRFKPRVPVIKKCIDILIEKEYLERVDGEKDTYSYLA
Formulation:	Liquid. Purified antibody supplied in 1x PBS buffer with 0.09% (w/v) sodium azide and 2% sucrose. <i>Note that this product is shipped as lyophilized powder to China customers.</i>
Conjugation:	Unconjugated
Storage:	Store at -20°C as received.
Stability:	Stable for 12 months from date of receipt.
Predicted Protein Size:	90 kDa
Gene Name:	cullin 1
Database Link:	NP_003583 Entrez Gene 8454 Human Q13616
Background:	Cul1 may contribute to catalysis through the positioning of the substrate and the ubiquitin-conjugating enzyme
Synonyms:	MGC149834; MGC149835
Note:	Immunogen sequence homology: African clawed frog: 100%; Bovine: 100%; Chicken: 100%; Dog: 100%; Human: 100%; Mouse: 100%; Rat: 100%; Zebrafish: 100%
Protein Families:	Druggable Genome



[View online »](#)

Protein Pathways: Cell cycle, Oocyte meiosis, TGF-beta signaling pathway, Ubiquitin mediated proteolysis, Wnt signaling pathway

Product images:



WB Suggested Anti-CUL1 Antibody Titration: 1.25 ug/ml; ELISA Titer: 1:1562500; Positive Control: Jurkat cell lysate