

Product datasheet for **TA330370**

CDC34 Rabbit Polyclonal Antibody

Product data:

Product Type:	Primary Antibodies
Applications:	WB
Recommended Dilution:	WB
Reactivity:	Human
Host:	Rabbit
Isotype:	IgG
Clonality:	Polyclonal
Immunogen:	The immunogen for anti-CDC34 antibody: synthetic peptide directed towards the middle region of human CDC34. Synthetic peptide located within the following region: TLAEYCVKTKAPAPDEGSDLFYDDYYEDGEVEVEEADSCFGDDEDDSGTEE
Formulation:	Liquid. Purified antibody supplied in 1x PBS buffer with 0.09% (w/v) sodium azide and 2% sucrose. <i>Note that this product is shipped as lyophilized powder to China customers.</i>
Conjugation:	Unconjugated
Storage:	Store at -20°C as received.
Stability:	Stable for 12 months from date of receipt.
Predicted Protein Size:	27 kDa
Gene Name:	cell division cycle 34
Database Link:	NP_004350 Entrez Gene 997 Human P49427
Background:	CDC34 catalyzes the covalent attachment of ubiquitin to other proteins. CDC34 may be involved in degradation of katenin. The protein encoded by this gene is a member of the ubiquitin-conjugating enzyme family. Ubiquitin-conjugating enzyme catalyzes the covalent attachment of ubiquitin to other proteins. This protein is a part of the large multiprotein complex, which is required for ubiquitin-mediated degradation of cell cycle G1 regulators, and for the initiation of DNA replication. Publication Note: This RefSeq record includes a subset of the publications that are available for this gene. Please see the Entrez Gene record to access additional publications.



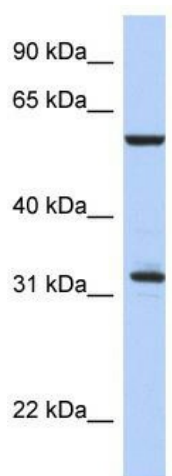
[View online »](#)

Synonyms: E2-CDC34; UBC3; UBCH3; UBE2R1

Note: Immunogen sequence homology: Bovine: 100%; Dog: 92%; Rat: 92%; Chicken: 78%

Protein Pathways: Ubiquitin mediated proteolysis

Product images:



WB Suggested Anti-CDC34 Antibody Titration: 0.2-1 ug/ml; ELISA Titer: 1:12500; Positive Control: Human Thymus