

Product datasheet for **TA330369**

p15 INK4b (CDKN2B) Rabbit Polyclonal Antibody

Product data:

Product Type:	Primary Antibodies
Applications:	WB
Recommended Dilution:	WB
Reactivity:	Human
Host:	Rabbit
Isotype:	IgG
Clonality:	Polyclonal
Immunogen:	The immunogen for anti-CDKN2B antibody: synthetic peptide directed towards the middle region of human CDKN2B. Synthetic peptide located within the following region: REGFLDTLVVLRAGARLDVRDAWGRLPVDLAEERGHHRDVAGYLRTATGD
Formulation:	Liquid. Purified antibody supplied in 1x PBS buffer with 0.09% (w/v) sodium azide and 2% sucrose. <i>Note that this product is shipped as lyophilized powder to China customers.</i>
Conjugation:	Unconjugated
Storage:	Store at -20°C as received.
Stability:	Stable for 12 months from date of receipt.
Predicted Protein Size:	15 kDa
Gene Name:	cyclin-dependent kinase inhibitor 2B
Database Link:	NP_004927 Entrez Gene 1030 Human P42772
Background:	CDKN2B's gene lies adjacent to the tumor suppressor gene CDKN2A in a region that is frequently mutated and deleted in a wide variety of tumors. CDKN2B is a cyclin-dependent kinase inhibitor, which forms a complex with CDK4 or CDK6, and prevents the activation of the CDK kinases, thus the encoded protein functions as a cell growth regulator that controls cell cycle G1 progression. The expression of this gene was found to be dramatically induced by TGF beta, which suggested its role in the TGF beta induced growth inhibition.
Synonyms:	CDK4I; INK4B; MTS2; P15; p15INK4b; TP15



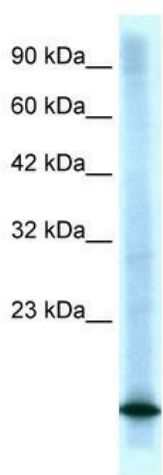
[View online »](#)

Note: Immunogen sequence homology: Pig: 100%; Dog: 91%; Rabbit: 91%; Guinea pig: 83%; Mouse: 83%; Rat: 83%

Protein Families: Druggable Genome

Protein Pathways: Cell cycle, Pathways in cancer, Small cell lung cancer, TGF-beta signaling pathway

Product images:



WB Suggested Anti-CDKN2B Antibody Titration:
0.2-1 ug/ml; Positive Control: Jurkat cell lysate