

## Product datasheet for **TA330365**

### Cyclin D3 (CCND3) Rabbit Polyclonal Antibody

#### Product data:

Product Type:	Primary Antibodies
Applications:	IHC, WB
Recommended Dilution:	WB, IHC
Reactivity:	Human, Mouse
Host:	Rabbit
Isotype:	IgG
Clonality:	Polyclonal
Immunogen:	The immunogen for anti-CCND3 antibody: synthetic peptide directed towards the C terminal of human CCND3. Synthetic peptide located within the following region: CQEIQEALRESLREASQTSSSPAPKAPRGSSSQGPSQTSTPTDVTAIHL
Formulation:	Liquid. Purified antibody supplied in 1x PBS buffer with 0.09% (w/v) sodium azide and 2% sucrose. <i>Note that this product is shipped as lyophilized powder to China customers.</i>
Conjugation:	Unconjugated
Storage:	Store at -20°C as received.
Stability:	Stable for 12 months from date of receipt.
Predicted Protein Size:	33 kDa
Gene Name:	cyclin D3
Database Link:	<a href="#">NP_001751</a> <a href="#">Entrez Gene 12445 Mouse</a> <a href="#">Entrez Gene 896 Human</a> <a href="#">P30281</a>



[View online »](#)

**Background:** CCND3 encodes a protein that belongs to the highly conserved cyclin family, whose members are characterized by a dramatic periodicity in protein abundance through the cell cycle. Cyclins function as regulators of CDK kinases. Different cyclins exhibit distinct expression and degradation patterns which contribute to the temporal coordination of each mitotic event. This cyclin forms a complex with and functions as a regulatory subunit of CDK4 or CDK6, whose activity is required for cell cycle G1/S transition. This protein has been shown to interact with and be involved in the phosphorylation of tumor suppressor protein Rb. The CDK4 activity associated with this cyclin was reported to be necessary for cell cycle progression through G2 phase into mitosis after UV radiation.

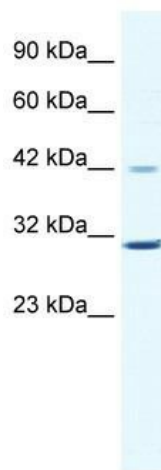
**Synonyms:** cyclin D3; D3-type cyclin; G1; OTTHUMP00000016390; S-specific cyclin D3

**Note:** Immunogen sequence homology: Bovine: 100%; Dog: 100%; Human: 100%; Mouse: 100%; Pig: 100%; Rat: 100%; Sheep: 100%; Guinea pig: 92%; Chicken: 80%

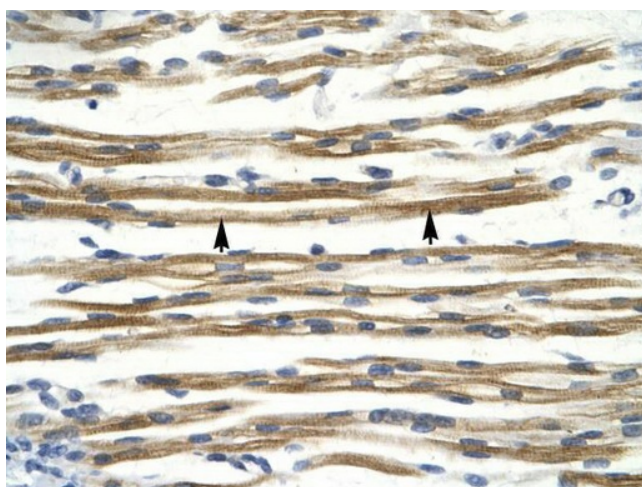
**Protein Families:** Druggable Genome

**Protein Pathways:** Cell cycle, Focal adhesion, Jak-STAT signaling pathway, p53 signaling pathway, Wnt signaling pathway

### Product images:



WB Suggested Anti-CCND3 Antibody Titration: 0.2-1 ug/ml; ELISA Titer: 1:62500; Positive Control: Jurkat cell lysate. CCND3 is supported by BioGPS gene expression data to be expressed in Jurkat



Human Muscle