

Product datasheet for **TA330364**

Cullin 2 (CUL2) Rabbit Polyclonal Antibody

Product data:

Product Type:	Primary Antibodies
Recommended Dilution:	WB
Reactivity:	Human
Host:	Rabbit
Isotype:	IgG
Clonality:	Polyclonal
Immunogen:	The immunogen for anti-CUL2 antibody: synthetic peptide directed towards the middle region of human CUL2. Synthetic peptide located within the following region: HNALIQEVISQSRARFNPSISMIKKCIEVLIDKQYIERSQASADEYSYVA
Formulation:	Liquid. Purified antibody supplied in 1x PBS buffer with 0.09% (w/v) sodium azide and 2% sucrose. <i>Note that this product is shipped as lyophilized powder to China customers.</i>
Conjugation:	Unconjugated
Storage:	Store at -20°C as received.
Stability:	Stable for 12 months from date of receipt.
Predicted Protein Size:	87 kDa
Gene Name:	cullin 2
Database Link:	NP_003582 Entrez Gene 8453 Human Q13617
Background:	CUL2 is a core component of multiple cullin-RING-based ECS (ElonginB/C-CUL2/5-SOCS-box protein) E3 ubiquitin-protein ligase complexes, which mediate the ubiquitination of target proteins. This protein may serve as a rigid scaffold in the complex and may contribute to catalysis through positioning of the substrate and the ubiquitin-conjugating enzyme. The E3 ubiquitin-protein ligase activity of the complex is dependent on the neddylation of the cullin subunit and is inhibited by the association of the deneddylated cullin subunit with TIP120A/CAND1. By similarity. The functional specificity of the ECS complex depends on the substrate recognition component. ECS(VHL) mediates the ubiquitination of hypoxia-inducible factor (HIF).



[View online »](#)

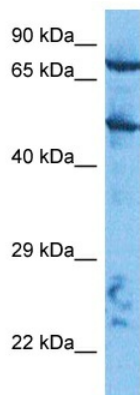
Synonyms: MGC131970

Note: Immunogen sequence homology: African clawed frog: 100%; Bovine: 100%; Chicken: 100%; Dog: 100%; Horse: 100%; Human: 100%; Mouse: 100%; Pig: 100%; Rabbit: 100%; Rat: 100%; Zebrafish: 92%

Protein Families: Druggable Genome

Protein Pathways: Pathways in cancer, Renal cell carcinoma, Ubiquitin mediated proteolysis

Product images:



Host: Rabbit
Target Name: CUL2
Sample Type: HepG2 Cell Lysate
Antibody Dilution: 1.0µg/ml

Host: Rabbit
Target Name: CUL2
Sample Tissue: HepG2 Whole Cell lysates
Antibody Dilution: 1.0ug/ml