

Product datasheet for **TA330363**

Cyclin G2 (CCNG2) Rabbit Polyclonal Antibody

Product data:

Product Type:	Primary Antibodies
Applications:	WB
Recommended Dilution:	WB
Reactivity:	Human
Host:	Rabbit
Isotype:	IgG
Clonality:	Polyclonal
Immunogen:	The immunogen for anti-CCNG2 antibody: synthetic peptide directed towards the N terminal of human CCNG2. Synthetic peptide located within the following region: MKDLGAEHLAGHEGVQLLGLLNIVYLEQEERFQPREKGLSLIEATPENDNT
Formulation:	Liquid. Purified antibody supplied in 1x PBS buffer with 0.09% (w/v) sodium azide and 2% sucrose. <i>Note that this product is shipped as lyophilized powder to China customers.</i>
Conjugation:	Unconjugated
Storage:	Store at -20°C as received.
Stability:	Stable for 12 months from date of receipt.
Predicted Protein Size:	39 kDa
Gene Name:	cyclin G2
Database Link:	NP_004345 Entrez Gene 901 Human Q16589
Background:	The eukaryotic cell cycle is governed by cyclin-dependent protein kinases (CDKs) whose activities are regulated by cyclins and CDK inhibitors. The 8 species of cyclins reported in mammals, cyclins A through H, share a conserved amino acid sequence of about 90 residues called the cyclin box. The amino acid sequence of cyclin G is well conserved among mammals. The nucleotide sequence of cyclin G1 and cyclin G2 are 53% identical. Unlike cyclin G1, cyclin G2 contains a C-terminal PEST protein destabilization motif, suggesting that cyclin G2 expression is tightly regulated through the cell cycle.



[View online »](#)

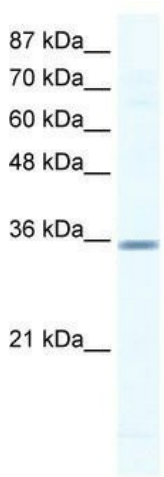
Synonyms: cyclin G2; OTTHUMP00000160592

Note: Immunogen sequence homology: Human: 100%; Bovine: 91%; Dog: 91%; Mouse: 83%; Rat: 83%

Protein Families: Druggable Genome

Protein Pathways: p53 signaling pathway

Product images:



Rabbit Anti-CCNG2 Antibody
 Catalog Number: TA330363

Lane: Jurkat Cell Lysate

Antibody Titration: 2.5µg/ml

Gel Concentration: 12%

WB Suggested Anti-CCNG2 Antibody Titration:
 2.5ug/ml; ELISA Titer: 1:312500; Positive Control:
 Jurkat cell lysate