

Product datasheet for **TA330362**

CDC20 Rabbit Polyclonal Antibody

Product data:

Product Type:	Primary Antibodies
Applications:	IHC, WB
Recommended Dilution:	WB, IHC
Reactivity:	Human
Host:	Rabbit
Isotype:	IgG
Clonality:	Polyclonal
Immunogen:	The immunogen for anti-CDC20 antibody: synthetic peptide directed towards the N terminal of human CDC20. Synthetic peptide located within the following region: MAQFAFESDLHSLQLDAPIPNAPPARWQRKAKEAAGPAPSPMRAANRSH
Formulation:	Liquid. Purified antibody supplied in 1x PBS buffer with 0.09% (w/v) sodium azide and 2% sucrose. <i>Note that this product is shipped as lyophilized powder to China customers.</i>
Conjugation:	Unconjugated
Storage:	Store at -20°C as received.
Stability:	Stable for 12 months from date of receipt.
Predicted Protein Size:	55 kDa
Gene Name:	cell division cycle 20
Database Link:	NP_001246 Entrez Gene 991 Human Q12834
Background:	CDC20 appears to act as a regulatory protein interacting with several other proteins at multiple points in the cell cycle. It is required for two microtubule-dependent processes, nuclear movement prior to anaphase and chromosome separation. CDC20 appears to act as a regulatory protein interacting with several other proteins at multiple points in the cell cycle. It is required for two microtubule-dependent processes, nuclear movement prior to anaphase and chromosome separation. Publication Note: This RefSeq record includes a subset of the publications that are available for this gene. Please see the Entrez Gene record to access additional publications.



[View online »](#)

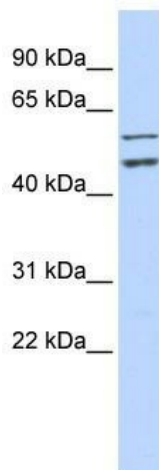
Synonyms: bA276H19.3; CDC20A; p55CDC

Note: Immunogen sequence homology: African clawed frog: 100%; Bovine: 100%; Horse: 100%; Human: 100%; Mouse: 100%; Pig: 100%; Rat: 100%; Chicken: 91%; Dog: 91%

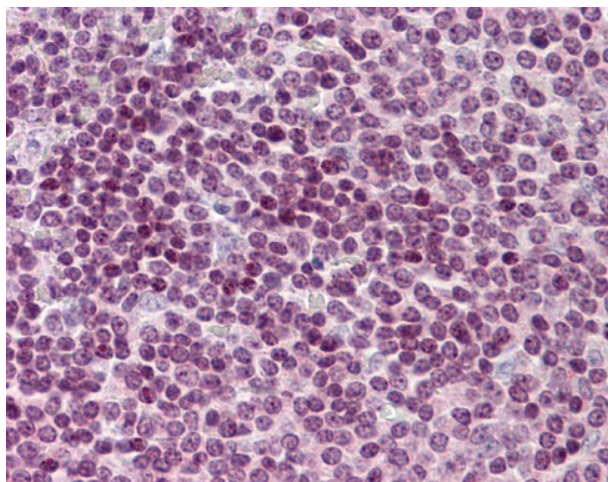
Protein Families: Druggable Genome

Protein Pathways: Cell cycle, Oocyte meiosis, Ubiquitin mediated proteolysis

Product images:



WB Suggested Anti-CDC20 Antibody Titration: 0.2-1 ug/ml; ELISA Titer: 1:62500; Positive Control: HeLa cell lysate. CDC20 is supported by BioGPS gene expression data to be expressed in HeLa



Spleen