

Product datasheet for **TA330355**

PCTAIRE1 (CDK16) Rabbit Polyclonal Antibody

Product data:

Product Type:	Primary Antibodies
Applications:	WB
Recommended Dilution:	WB
Reactivity:	Human
Host:	Rabbit
Isotype:	IgG
Clonality:	Polyclonal
Immunogen:	The immunogen for anti-PCTK1 antibody: synthetic peptide directed towards the N terminal of human PCTK1. Synthetic peptide located within the following region: MDRMKKIKRQLSMTLRGGRGIDKTNGAPEQIGLDESGGGGGSDPGEAPTR
Formulation:	Liquid. Purified antibody supplied in 1x PBS buffer with 0.09% (w/v) sodium azide and 2% sucrose. <i>Note that this product is shipped as lyophilized powder to China customers.</i>
Conjugation:	Unconjugated
Storage:	Store at -20°C as received.
Stability:	Stable for 12 months from date of receipt.
Predicted Protein Size:	56 kDa
Gene Name:	cyclin-dependent kinase 16
Database Link:	NP_006192 Entrez Gene 5127 Human Q00536
Background:	PCTK1 may play a role in signal transduction cascades in terminally differentiated cells. The protein encoded by this gene belongs to the cdc2/cdkx subfamily of the ser/thr family of protein kinases. It may play a role in signal transduction cascades in terminally differentiated cells. This gene is thought to escape X inactivation. Two transcript variants encoding the same protein have been found for this gene.
Synonyms:	PCTAIRE; PCTAIRE1; PCTGAIRE; PCTK1

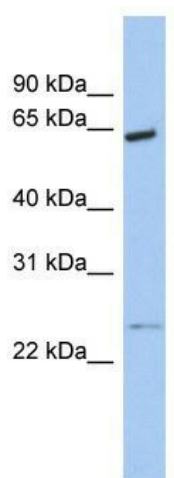


[View online »](#)

Note: Immunogen sequence homology: Western clawed frog:100%; Bovine:100%; Rat:100%; Dog:100%; Mouse:100%; African clawed frog:100%; Human:100%; Zebrafish:91%; Blood fluke:90%

Protein Families: Druggable Genome, Protein Kinase

Product images:



WB Suggested Anti-PCTK1 Antibody Titration: 0.2-1 ug/ml; ELISA Titer: 1:12500; Positive Control: Human Small Intestine