

Product datasheet for **TA330352**

Cyclin G (CCNG1) Rabbit Polyclonal Antibody

Product data:

Product Type:	Primary Antibodies
Applications:	WB
Recommended Dilution:	WB
Reactivity:	Human
Host:	Rabbit
Isotype:	IgG
Clonality:	Polyclonal
Immunogen:	The immunogen for anti-CCNG1 antibody: synthetic peptide directed towards the N terminal of human CCNG1. Synthetic peptide located within the following region: IEVLTTTDSQKLLHQLNALLEQESRCQPKVCGLRLIESAHDNGLRMTARL
Formulation:	Liquid. Purified antibody supplied in 1x PBS buffer with 0.09% (w/v) sodium azide and 2% sucrose. <i>Note that this product is shipped as lyophilized powder to China customers.</i>
Conjugation:	Unconjugated
Storage:	Store at -20°C as received.
Stability:	Stable for 12 months from date of receipt.
Predicted Protein Size:	34 kDa
Gene Name:	cyclin G1
Database Link:	NP_004051 Entrez Gene 900 Human P51959



[View online »](#)

Background:

The eukaryotic cell cycle is governed by cyclin-dependent protein kinases (CDKs) whose activities are regulated by cyclins and CDK inhibitors. CCNG1 is a member of the cyclin family and contains the cyclin box. It lacks the protein destabilizing (PEST) sequence that is present in other family members. Transcriptional activation of this gene can be induced by tumor protein p53. Two transcript variants encoding the same protein have been identified for this gene. The eukaryotic cell cycle is governed by cyclin-dependent protein kinases (CDKs) whose activities are regulated by cyclins and CDK inhibitors. The protein encoded by this gene is a member of the cyclin family and contains the cyclin box. The encoded protein lacks the protein destabilizing (PEST) sequence that is present in other family members. Transcriptional activation of this gene can be induced by tumor protein p53. Two transcript variants encoding the same protein have been identified for this gene.

Synonyms:

CCNG

Note:

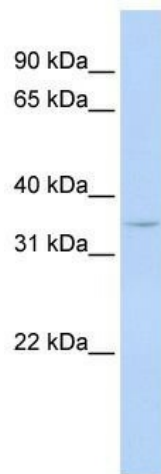
Immunogen sequence homology: Bovine: 100%; Human: 100%; Dog: 92%; Mouse: 92%; Pig: 92%; Rat: 92%

Protein Families:

Druggable Genome

Protein Pathways:

p53 signaling pathway

Product images:

WB Suggested Anti-CCNG1 Antibody Titration:
0.2-1 ug/ml; ELISA Titer: 1:62500; Positive Control:
MCF7 cell lysate