

## Product datasheet for **TA330351**

### CDK3 Rabbit Polyclonal Antibody

#### Product data:

Product Type:	Primary Antibodies
Applications:	WB
Recommended Dilution:	WB
Reactivity:	Human, Mouse
Host:	Rabbit
Isotype:	IgG
Clonality:	Polyclonal
Immunogen:	The immunogen for anti-CDK3 antibody: synthetic peptide directed towards the C terminal of human CDK3. Synthetic peptide located within the following region: NLEPEGRDLLMQLLQYDPSQRITAKTALAHPYFSSPEPSPAARQYVLQRF
Formulation:	Liquid. Purified antibody supplied in 1x PBS buffer with 0.09% (w/v) sodium azide and 2% sucrose. <i>Note that this product is shipped as lyophilized powder to China customers.</i>
Conjugation:	Unconjugated
Storage:	Store at -20°C as received.
Stability:	Stable for 12 months from date of receipt.
Predicted Protein Size:	35 kDa
Gene Name:	cyclin-dependent kinase 3
Database Link:	<a href="#">NP_001249</a> <a href="#">Entrez Gene 1018 Human</a> <a href="#">Q00526</a>



[View online »](#)

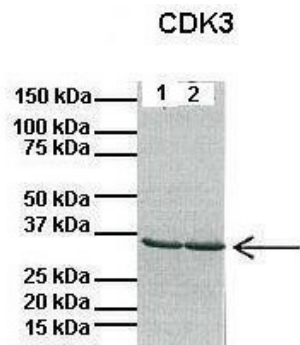
**Background:** CDK3 is a member of the cyclin-dependent protein kinase family. The protein promotes entry into S phase, in part by activating members of the E2F family of transcription factors. The protein also associates with cyclin C and phosphorylates the retinoblastoma 1 protein to promote exit from G0. This gene encodes a member of the cyclin-dependent protein kinase family. The protein promotes entry into S phase, in part by activating members of the E2F family of transcription factors. The protein also associates with cyclin C and phosphorylates the retinoblastoma 1 protein to promote exit from G0. Publication Note: This RefSeq record includes a subset of the publications that are available for this gene. Please see the Entrez Gene record to access additional publications.

**Synonyms:** cyclin-dependent kinase 3

**Note:** Immunogen sequence homology: Human: 100%; Mouse: 93%; Rabbit: 87%; Dog: 86%; Bovine: 81%

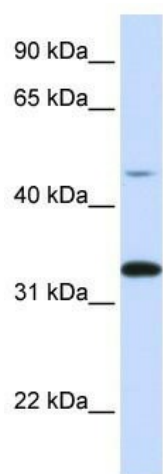
**Protein Families:** Druggable Genome, Protein Kinase

### Product images:



Lanes: 1: 40ug mouse heart lysate, 2: 40ug mouse heart lysate; Primary Antibody Dilution: 1:1000; Secondary Antibody: Anti-rabbit HRP; Secondary Antibody Dilution: 1:10000; Gene Name: CDK3; Submitted by: Anonymous;

See Immunoblot 3 Data and customer Feedback for more Information



WB Suggested Anti-CDK3 Antibody Titration: 0.2-1 ug/ml; ELISA Titer: 1:62500; Positive Control: Hela cell lysate