

## Product datasheet for **TA330339**

### **RIP2 (RIPK2) Rabbit Polyclonal Antibody**

#### **Product data:**

Product Type:	Primary Antibodies
Applications:	IF, WB
Recommended Dilution:	WB, IF
Reactivity:	Human, Rat
Host:	Rabbit
Isotype:	IgG
Clonality:	Polyclonal
Immunogen:	The immunogen for anti-RIPK2 antibody: synthetic peptide directed towards the middle region of human RIPK2. Synthetic peptide located within the following region: LRQERKRPLLDLHIELNGYMYDWNSRVSAKEKYYVWLQHTLRKKLILSYT
Formulation:	Liquid. Purified antibody supplied in 1x PBS buffer with 0.09% (w/v) sodium azide and 2% sucrose. <i>Note that this product is shipped as lyophilized powder to China customers.</i>
Conjugation:	Unconjugated
Storage:	Store at -20°C as received.
Stability:	Stable for 12 months from date of receipt.
Predicted Protein Size:	61 kDa
Gene Name:	receptor interacting serine/threonine kinase 2
Database Link:	<a href="#">NP_003812</a> <a href="#">Entrez Gene 362491 Rat</a> <a href="#">Entrez Gene 8767 Human</a> <a href="#">O43353</a>



[View online »](#)

**Background:**

RIPK2 is a member of the receptor-interacting protein (RIP) family of serine/threonine protein kinases. It contains a C-terminal caspase activation and recruitment domain (CARD), and is a component of signaling complexes in both the innate and adaptive immune pathways. It is a potent activator of NF-kappaB and inducer of apoptosis in response to various stimuli. This gene encodes a member of the receptor-interacting protein (RIP) family of serine/threonine protein kinases. The encoded protein contains a C-terminal caspase activation and recruitment domain (CARD), and is a component of signaling complexes in both the innate and adaptive immune pathways. It is a potent activator of NF-kappaB and inducer of apoptosis in response to various stimuli. Publication Note: This RefSeq record includes a subset of the publications that are available for this gene. Please see the Entrez Gene record to access additional publications.

**Synonyms:**

CARD3; CARDIAK; CCK; GIG30; RICK; RIP2

**Note:**

Immunogen sequence homology: Bovine: 85%; Dog: 85%; Horse: 85%; Human: 85%; Rabbit: 84%; Chicken: 78%; Guinea pig: 78%; Mouse: 78%; Rat: 78%

**Protein Families:**

Druggable Genome, Protein Kinase

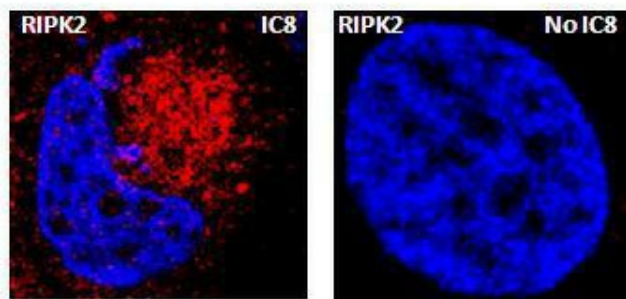
**Protein Pathways:**

Neurotrophin signaling pathway, NOD-like receptor signaling pathway

**Product images:**

WB Suggested Anti-RIPK2 Antibody Titration: 0.2-1 ug/ml; ELISA Titer: 1:312500; Positive Control: HepG2 cell lysate

## RIPK2



Red: RIPK2  
Blue: DAPI

Sample Type : Rat thyrocytes-FRTL-5 Primary  
Antibody Dilution : 1:100 Secondary Antibody :  
Anti-rabbit-Texas Red Secondary Antibody  
Dilution : 1:100 Color/Signal Descriptions : Red:  
RIPK2 Blue: DAPI Gene Name : RIPK2 Submitted  
by : Syed A Morshed, Mount Si