

Product datasheet for **TA330332**

Bcl rambo (BCL2L13) Rabbit Polyclonal Antibody

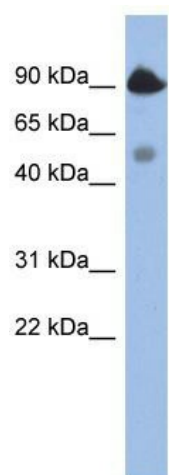
Product data:

Product Type:	Primary Antibodies
Applications:	WB
Recommended Dilution:	WB
Reactivity:	Human
Host:	Rabbit
Isotype:	IgG
Clonality:	Polyclonal
Immunogen:	The immunogen for anti-BCL2L13 antibody: synthetic peptide directed towards the middle region of human BCL2L13. Synthetic peptide located within the following region: VEEVVPALEPTETLLSEKEINAREESLVEELSPASEKKPVPPSEGKSRLS
Formulation:	Liquid. Purified antibody supplied in 1x PBS buffer with 0.09% (w/v) sodium azide and 2% sucrose.
Conjugation:	Unconjugated
Storage:	Store at -20°C as received.
Stability:	Stable for 12 months from date of receipt.
Predicted Protein Size:	53 kDa
Gene Name:	BCL2 like 13
Database Link:	NP_056182 Entrez Gene 23786 Human Q9B XK5
Background:	BCL2L13 May promote the activation of caspase-3 and apoptosis.
Synonyms:	BCL-RAMBO; Bcl2-L-13; MIL1
Note:	Immunogen sequence homology: Human: 100%
Protein Families:	Druggable Genome, Transmembrane



[View online »](#)

Product images:



WB Suggested Anti-BCL2L13 Antibody Titration:
0.2-1 ug/ml; ELISA Titer: 1:312500; Positive
Control: NCI-H226 cell lysate BCL2L13 is
supported by BioGPS gene expression data to be
expressed in NCIH226