

Product datasheet for **TA330330**

DIABLO Rabbit Polyclonal Antibody

Product data:

Product Type:	Primary Antibodies
Applications:	WB
Recommended Dilution:	WB
Reactivity:	Human
Host:	Rabbit
Isotype:	IgG
Clonality:	Polyclonal
Immunogen:	The immunogen for anti-DIABLO antibody: synthetic peptide directed towards the C terminal of human DIABLO. Synthetic peptide located within the following region: LVKLVQVEEVHQLSRKAETKLAEAQIEELRQKTQEEGEERAESEQEAYLRE
Formulation:	Liquid. Purified antibody supplied in 1x PBS buffer with 0.09% (w/v) sodium azide and 2% sucrose. <i>Note that this product is shipped as lyophilized powder to China customers.</i>
Conjugation:	Unconjugated
Storage:	Store at -20°C as received.
Stability:	Stable for 12 months from date of receipt.
Predicted Protein Size:	21 kDa
Gene Name:	diablo IAP-binding mitochondrial protein
Database Link:	NP_620308 Entrez Gene 56616 Human Q9NR28
Background:	DIABLO is an inhibitor of apoptosis protein (IAP)-binding protein. The encoded mitochondrial protein enters the cytosol when cells undergo apoptosis, and it moderates the caspase inhibition of IAPs. Multiple polyadenylation sites have been found for this gene. Several alternatively spliced transcript variants that encode distinct isoforms have been described for this gene but the validity of some transcripts, and their predicted ORFs, has not been determined conclusively.
Synonyms:	DFNA64; SMAC

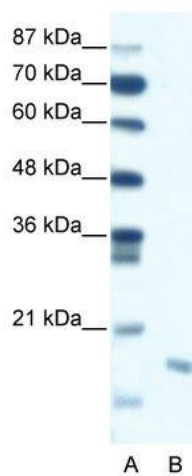


[View online »](#)

Note: Immunogen sequence homology: Human: 100%; Dog: 92%; Bovine: 85%; Horse: 85%; Pig: 85%

Protein Families: Transmembrane

Product images:



WB Suggested Anti-DIABLO Antibody Titration:
0.3125 ug/ml; ELISA Titer: 1:312500; Positive
Control: Jurkat cell lysate