

Product datasheet for **TA330328**

SEPTIN4 Rabbit Polyclonal Antibody

Product data:

Product Type:	Primary Antibodies
Applications:	IHC, WB
Recommended Dilution:	WB, IHC
Reactivity:	Human
Host:	Rabbit
Isotype:	IgG
Clonality:	Polyclonal
Immunogen:	The immunogen for anti-SEPT4: synthetic peptide directed towards the N terminal of human SEPT4 (septin-4). Synthetic peptide located within the following region: RSLGWQGNVPEDRTEAGIKRFLEDTTDDGELSKFVKDFSGNASCHPPEA
Formulation:	Liquid. Purified antibody supplied in 1x PBS buffer with 0.09% (w/v) sodium azide and 2% sucrose. <i>Note that this product is shipped as lyophilized powder to China customers.</i>
Conjugation:	Unconjugated
Storage:	Store at -20°C as received.
Stability:	Stable for 12 months from date of receipt.
Predicted Protein Size:	55 kDa
Gene Name:	septin 4
Database Link:	NP_004565 Entrez Gene 5414 Human Q8NEP4
Background:	The SEPT4 gene is a member of the septin gene family of nucleotide binding proteins, originally described in yeast as cell division cycle regulatory proteins. Septins are highly conserved in yeast, Drosophila, and mouse and appear to regulate cytoskeletal organization. SEPT4 encodes a protein that is thought to be part of a complex involved in cytokinesis.
Synonyms:	ARTS; BRADEION; CE5B3; H5; hCDCREL-2; hucep-7; MART; PNUTL2; SEP4
Note:	Immunogen sequence homology: Crab-eating macaque:100%; Sumatran orangutan:100%; Human:100%; Dog:84%

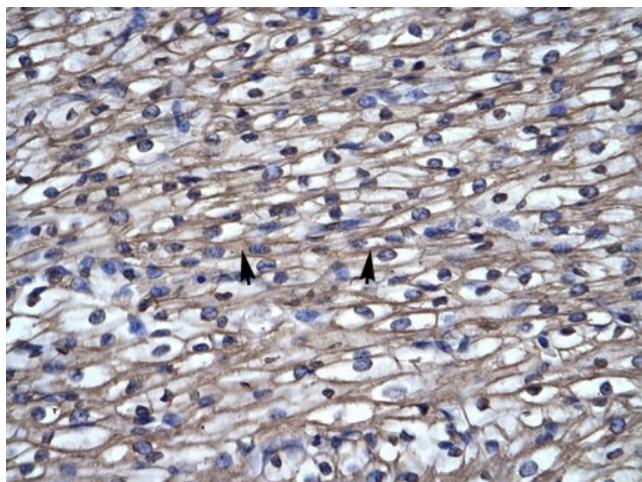


[View online »](#)

Product images:



WB Suggested Anti-SEPT4 Titration: 0.2-1 ug/ml;
Positive Control: Human cerebellum



Human Heart