

## Product datasheet for **TA330314**

### LSP1 Rabbit Polyclonal Antibody

#### Product data:

Product Type:	Primary Antibodies
Applications:	WB
Recommended Dilution:	WB
Reactivity:	Human
Host:	Rabbit
Isotype:	IgG
Clonality:	Polyclonal
Immunogen:	The immunogen for anti-LSP1 antibody: synthetic peptide directed towards the N terminal of human LSP1. Synthetic peptide located within the following region: CQHERDRQLQAQDEEGGGHVPKQEMLLSLKPSEAPELDEDEGFGDWS
Formulation:	Liquid. Purified antibody supplied in 1x PBS buffer with 0.09% (w/v) sodium azide and 2% sucrose. <i>Note that this product is shipped as lyophilized powder to China customers.</i>
Conjugation:	Unconjugated
Storage:	Store at -20°C as received.
Stability:	Stable for 12 months from date of receipt.
Predicted Protein Size:	37 kDa
Gene Name:	lymphocyte-specific protein 1
Database Link:	<a href="#">NP_002330</a> <a href="#">Entrez Gene 4046 Human P33241</a>
Background:	This protein is an intracellular F-actin binding protein. The protein is expressed in lymphocytes, neutrophils, macrophages, and endothelium and may regulate neutrophil motility, adhesion to fibrinogen matrix proteins, and transendothelial migration. This gene encodes an intracellular F-actin binding protein. The protein is expressed in lymphocytes, neutrophils, macrophages, and endothelium and may regulate neutrophil motility, adhesion to fibrinogen matrix proteins, and transendothelial migration. Alternative splicing results in multiple transcript variants encoding different isoforms.

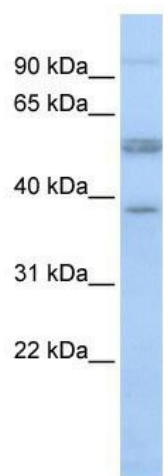


[View online »](#)

Synonyms: pp52; WP34

Note: Immunogen sequence homology: Human: 100%; Guinea pig: 90%; Dog: 83%

### Product images:



WB Suggested Anti-LSP1 Antibody Titration: 0.2-1 ug/ml; ELISA Titer: 1:62500; Positive Control: OVCA8-3 cell lysate